



factory

High-pressure
cleaner and
wet/dry vac

Dirt Devil

GB High-pressure cleaner
and wet/dry vac
Operating Manual

(Translation of the original Manual)



Read Manual prior to use!

Table of contents

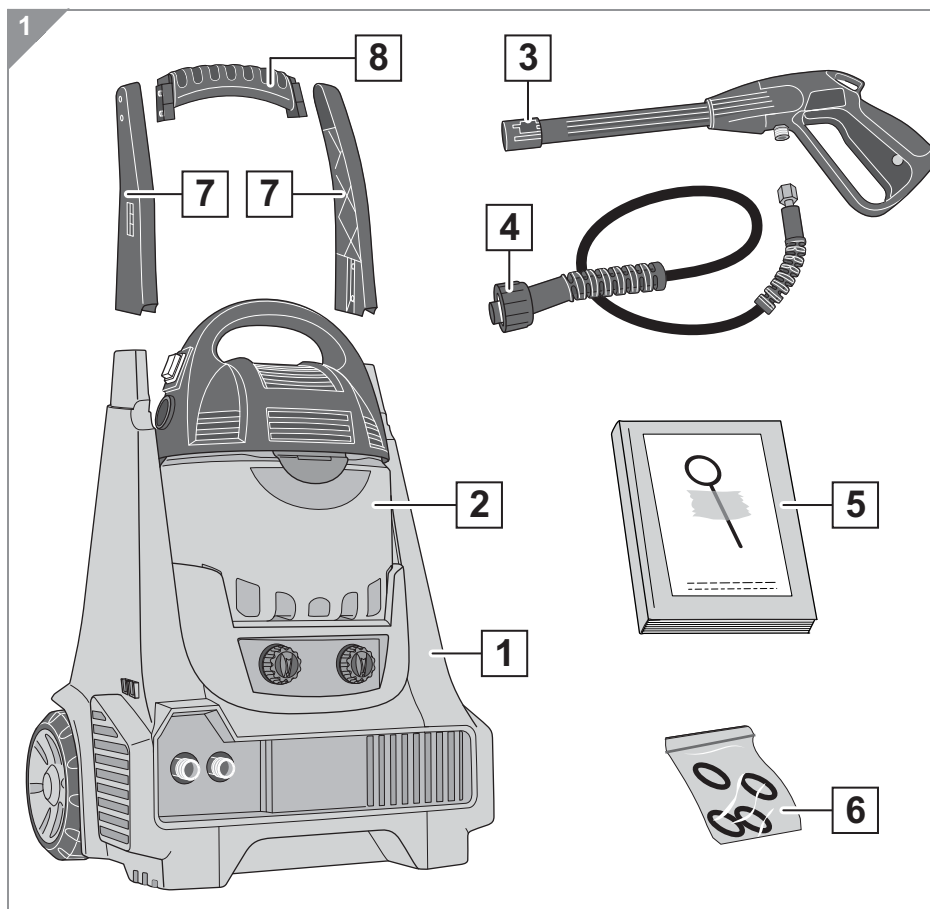
1 Overview	4
1.1 Scope of delivery	4
1.2 High-pressure cleaner in detail	6
1.3 Dry/wet vacuum cleaner in detail	8
1.4 Pistol in detail	9
1.5 Additional things you have to provide	10
1.6 Technical data of the high-pressure cleaner	11
1.7 Technical data of the wet/dry vacuum cleaner	12
2 Safety instructions	13
2.1 Concerning the operating manual	13
2.2 Concerning users and certain groups of people	14
2.3 Concerning the power supply	15
2.4 Concerning the jet of high-pressure produced	16
2.5 Concerning the noise produced	17
2.6 Regarding how to proceed in the case of a defective appliance..	17
2.7 Concerning intended use	18
2.8 Concerning predicted misuse	19
2.9 Concerning the safety equipment installed	21
2.10 Concerning the personal protective equipment required	22
2.11 Concerning the obligations of the owner (for commercial use)....	23
3 Unpacking and assembling	24
3.1 Unpacking	24
3.2 Assembly	25
4 High-pressure cleaning	28
4.1 Connecting attachments to pistol	28
4.2 Filling the cleaning agent tanks (only when required)	30
4.3 Selecting location of installation and area of use	31
4.4 Connecting the high-pressure hose	32
4.5 Connecting a garden hose (not in the scope of delivery)	33
4.6 Connecting the appliance plug to the power supply	34
4.7 High-pressure cleaning with the lance	35
4.8 High-pressure cleaning with the brushes (optional)	38
4.9 Applying cleaning agent	39
4.10 After high-pressure cleaning	40

Table of contents

5	Wet vacuuming	41
5.1	Before wet vacuuming	41
5.2	Selecting and fitting suction nozzle.....	42
5.3	Switching on and wet vacuuming.....	43
5.4	Switching off and emptying the dirt tank	44
6	Dry vacuum cleaning	45
6.1	Before dry vacuum cleaning	45
6.2	Switching on and dry vacuuming	46
6.3	After dry vacuum cleaning	47
7	Using the vacuum cleaner as a blower	48
7.1	Re-equipping from a dry vacuum cleaner to a blower	48
7.2	Blowing out dirt	48
8	Transport and storage	49
8.1	Transporting.....	49
8.2	Storage	49
9	Maintaining the appliance	50
9.1	Maintaining the filter screen of the high-pressure cleaner	50
9.2	Replace sealing rings.....	51
9.3	Cleaning the lance	51
9.4	Cleaning/changing the motor protection filter of the vac.....	52
9.5	Cleaning the housing	54
10	Correcting problems	55
10.1	Correcting problems with the high-pressure cleaner	55
10.2	Correcting problems at the wet/dry vacuum cleaner.....	57
10.3	Accessories, spare parts and reference sources.....	58
10.4	Warranty	59
10.5	Disposing of the appliance.....	59
	Test protocol (for commercial use)	61
	CE declaration of conformity	63
	International Service	64

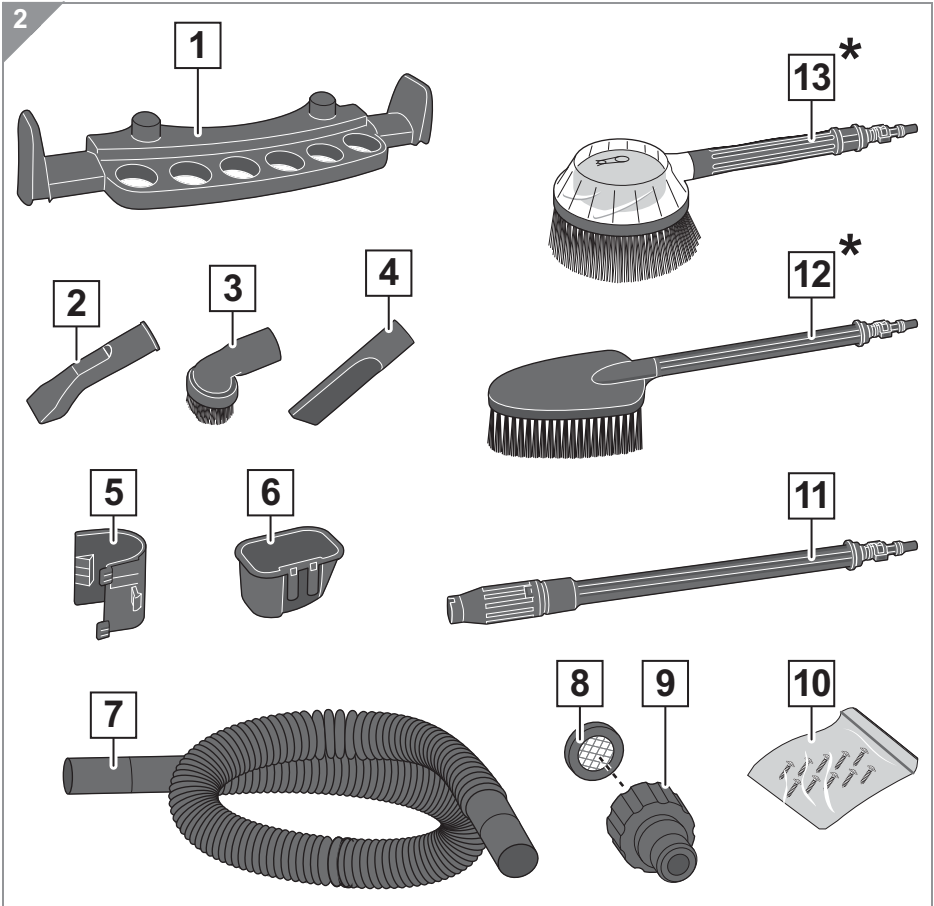
1 Overview

1.1 Scope of delivery



- 1 High-pressure cleaner,
▷ Chapter 1.2, “High-pressure cleaner in detail”
- 2 Wet/dry vacuum cleaner,
▷ Chapter 1.3, “Dry/wet vacuum cleaner in detail”
- 3 Pistol,
▷ Chapter 1.4, “Pistol in detail”
- 4 High-pressure hose
- 5 Operating manual with cleaning needle stuck to it
- 6 Plastic bag with four replacement sealing rings
- 7 Braces of the carrying handle
- 8 Carrying handle

1 Overview



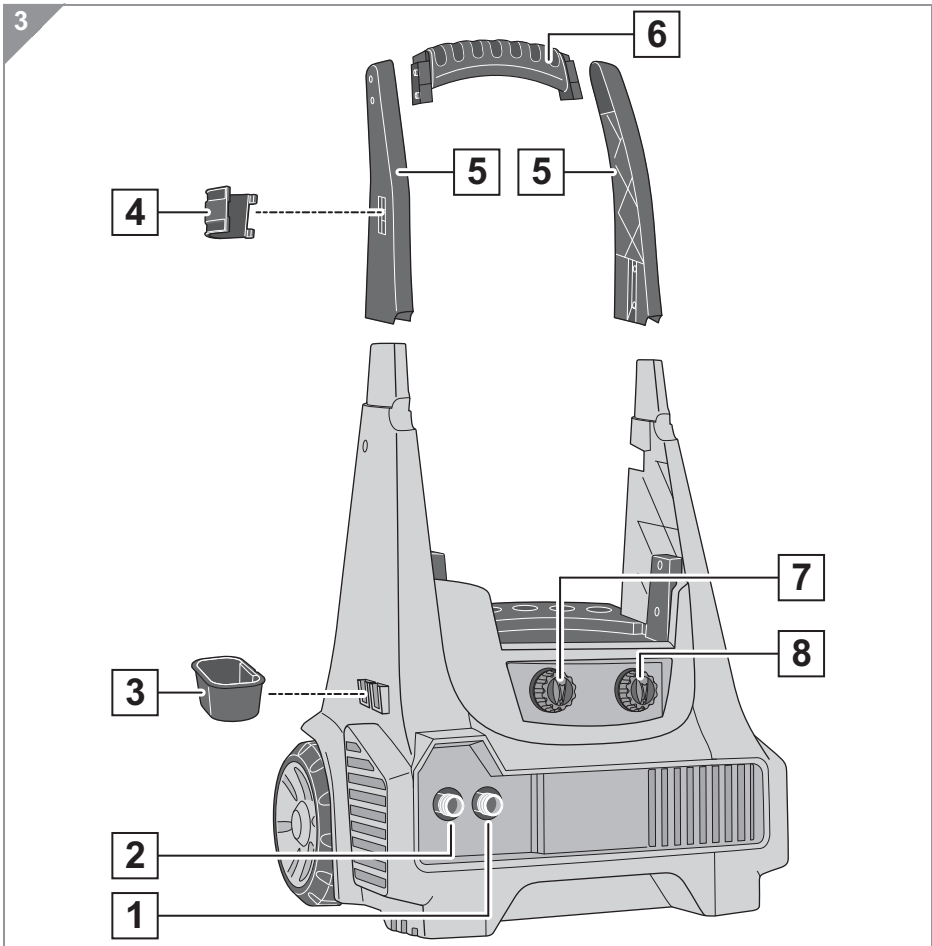
- 1 Accessories console
- 2 Universal nozzle
- 3 Furniture brush
- 4 Crevice nozzle
- 5 Upper pistol holder
- 6 Lower pistol holder
- 7 Suction hose

- 8 Filter screen
- 9 Quick connector adapter
- 10 Plastic bag with ten self-cutting screws
- 11 Lance
- 12* Stiff brush (optional*)
- 13* Roto-brush (optional*)

* depending on model and scope of delivery

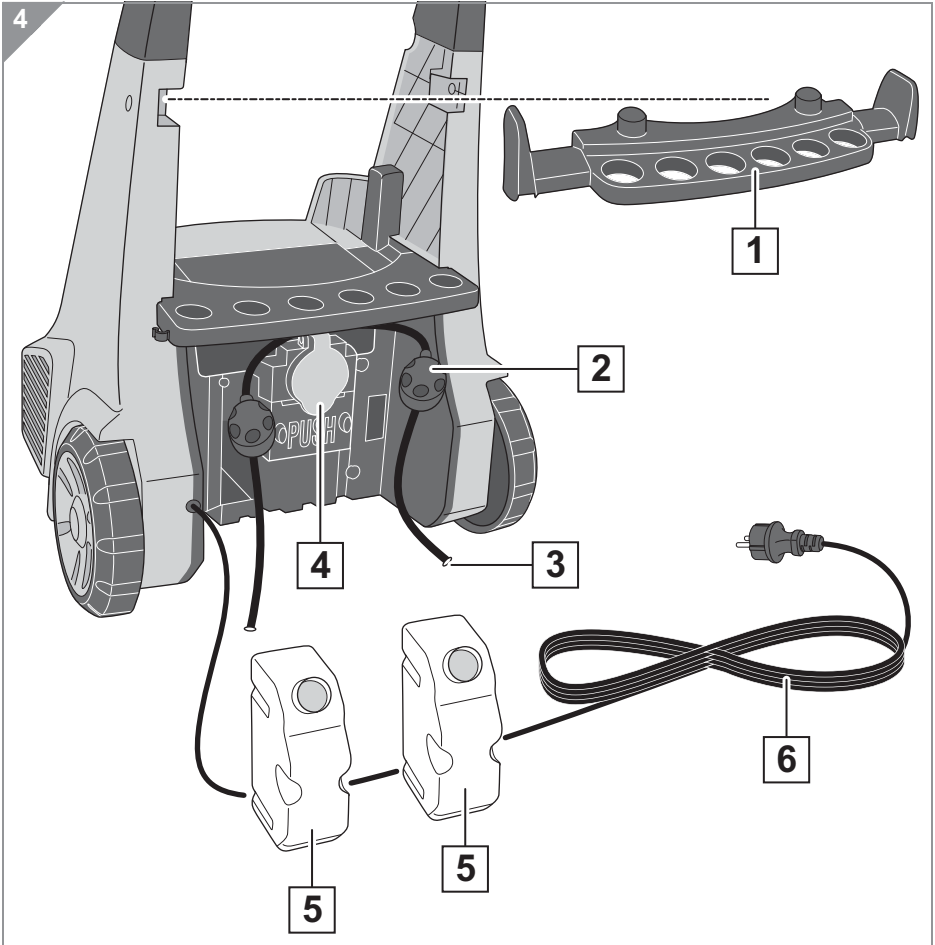
1 Overview

1.2 High-pressure cleaner in detail



- 1 Thread for the high-pressure hose
- 2 Thread for the adapter of the quick connector
- 3 Lower pistol holder
- 4 Upper pistol holder
- 5 Braces of the carrying handle
- 6 Carrying handle
- 7 On/Off switch with three positions:
 - Left: Pump on
 - Middle: Pump off
 - Right: Socket (Fig. 4/4) on
- 8 Continuously adjustable control knob for adding cleaning agent, [▷ Chapter 4.9, "Applying cleaning agent"](#)

1 Overview

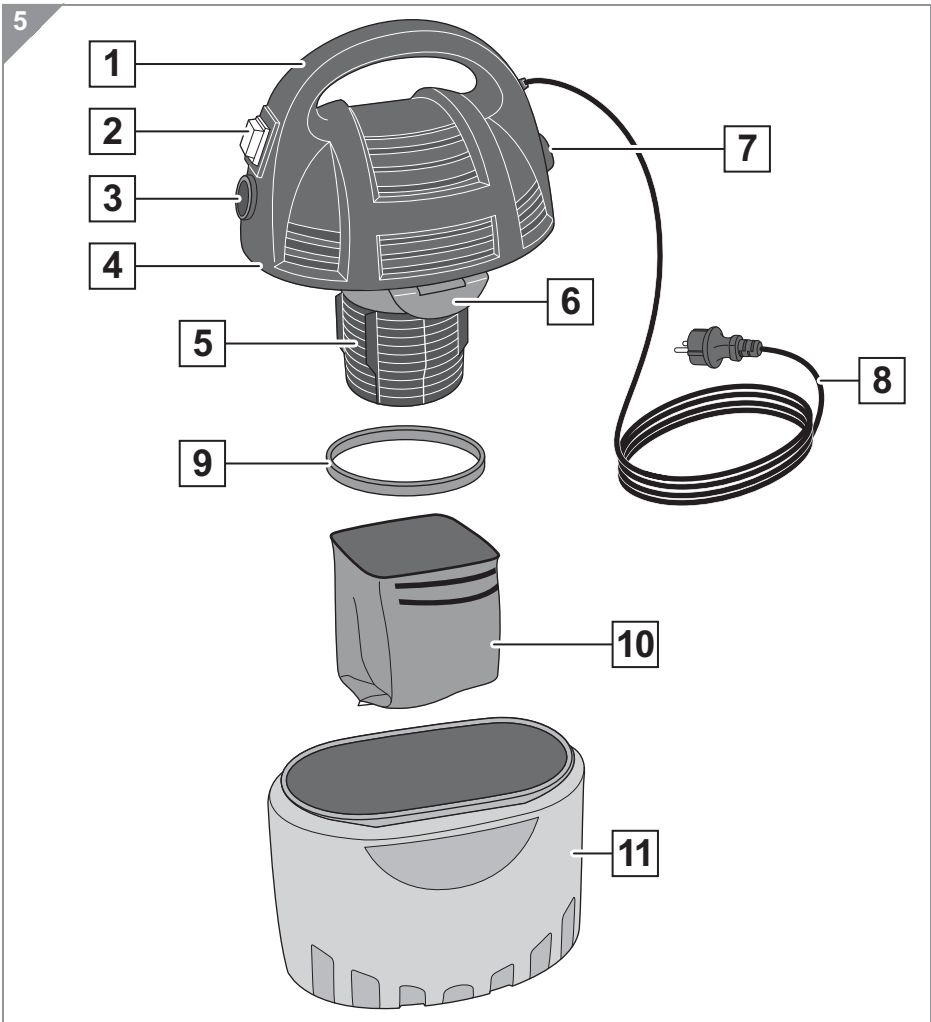


- 1 Accessories console
- 2 Filler cap
- 3 Cleaning agent hose

- 4 Service socket
- 5 Cleaning agent tank
- 6 Electricity cable with device plug

1 Overview

1.3 Dry/wet vacuum cleaner in detail



1 Carrying handle

2 On/Off switch

3 Connection piece 'VACUUM'

4 Motor unit

5 Motor cage

6 Retaining clip

7 Connection nozzle 'BLOWER'

8 Electricity cable with device plug

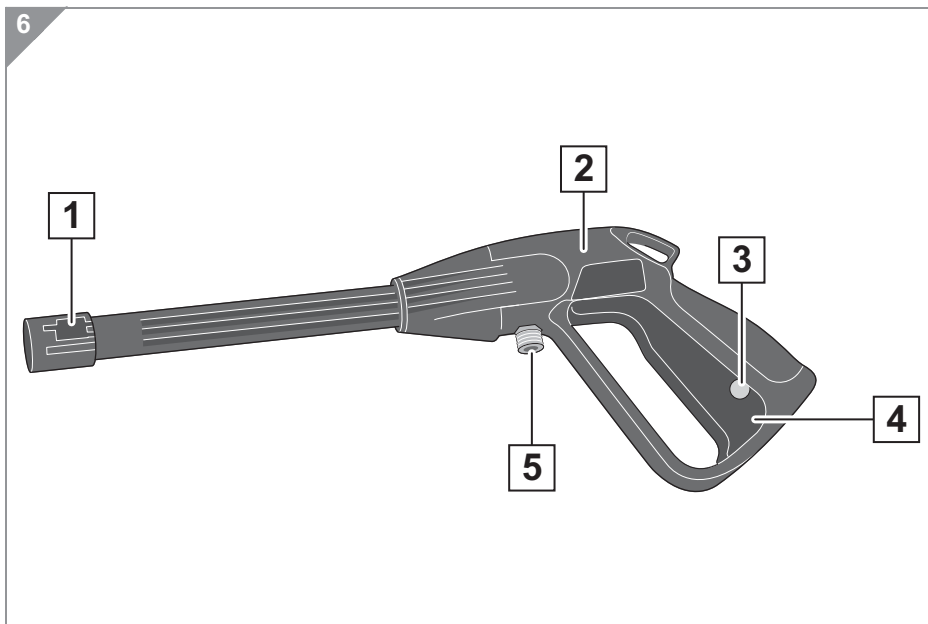
9 Rubber band

10 Motor protection filter with marking

11 Dirt tank

1 Overview

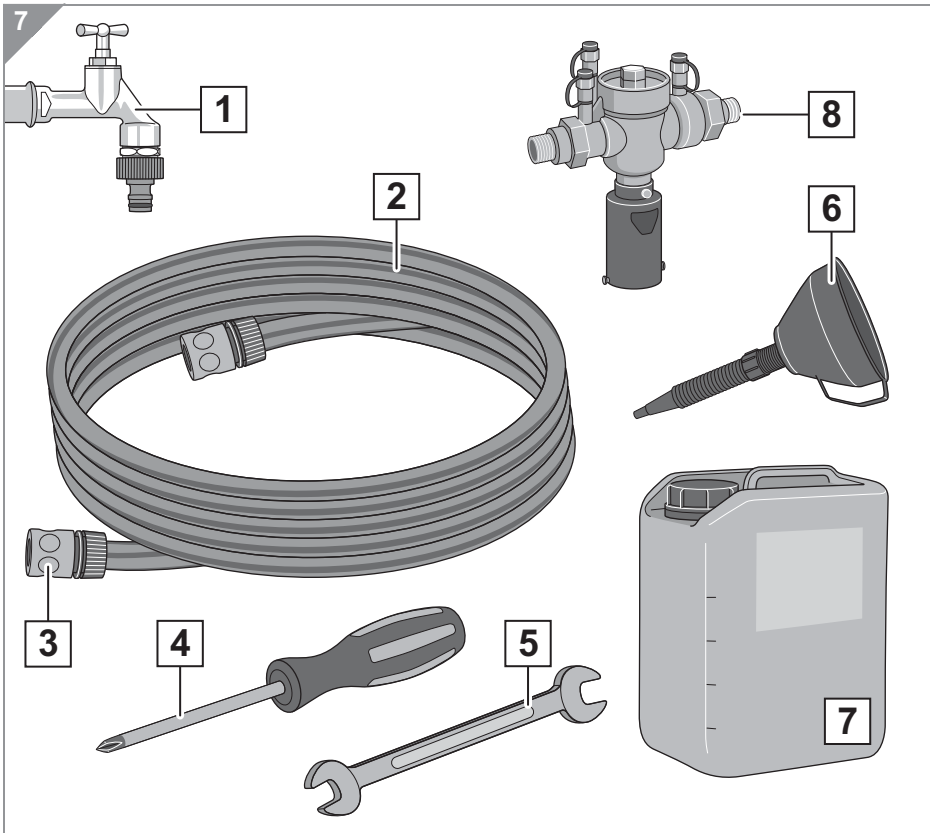
1.4 Pistol in detail



- 1 Nozzle with view window to connect the attachments
- 2 Pistol
- 3 Child protection device
- 4 Spray button
- 5 Thread to connect the high-pressure hose

1 Overview

1.5 Additional things you have to provide



- 1 Service water connection
- 2 Garden hose
- 3 Quick connector
- 4 Slot-head or Philips screwdriver
- 5 Open-end spanner (size: 17)

Only if required:

- 6 Funnel (for cleaning agent)
- 7 Cleaning agent
- 8 BA backflow preventer (picture serves as an example) if the high-pressure cleaner is to be connected directly to a drinking water mains

1 Overview

1.6 Technical data of the high-pressure cleaner

Type of appliance	High-pressure cleaner with removable wet/dry vacuum cleaner
Appliance name	'factory' high-pressure cleaner and wet/dry vacuum cleaner
Model number	M3300
Rated output	High-pressure cleaner: 1800 W Service socket: max. 1200 W
Rated voltage	220 – 240 V~; 50 Hz
Degree of protection	IPX5
Protection class	I
Dimensions	490 mm x 370 mm x 875 mm
Total weight (empty)	approx. 15 kg
Sound power level	96 dB (A) [in accordance with DIN EN 60335-2-79:2009]
Sound pressure value	78 ± 3 dB (A) [in accordance with DIN EN 60335-2-79:2009]
Water input pressure	0.15...0.6 MPa
Max. permissible water temperature	40 °C
Nominal flow rate	5 l/min
Max. flow rate	8 l/min
Design pressure	9 MPa \triangleq 90 bar
max. operating pressure	13.5 MPa \triangleq 135 bar
Vibration at pistol	0.7 m/s ² ± 0.15 m/s ²
Recoil at pistol	< 20 N
Power cord length	approx. 10 m
Permissible outside temperature	5 °C to 40 °C
Mix ratio (when the control knob is fully open)	approx. 1:10 (water: cleaning agent)

1 Overview

1.7 Technical data of the wet/dry vacuum cleaner

Type of appliance	Wet/dry vacuum cleaner
Appliance name	'factory' wet/dry vacuum cleaner
Model number	M3350
Rated output	800 W
Rated voltage	220 – 240 V~; 50 Hz
Degree of protection	IPX5
Protection class	II
Dimensions	400 mm x 300 mm x 230 mm
Total weight (empty)	approx. 3.4 kg
Sound emissions value	90 dB (A) [in accordance with DIN EN 60335-2-2:2010]
Power cord length	approx. 3 m
Permissible outside temperature	5 °C ... 40 °C

2 Safety instructions

2.1 Concerning the operating manual



Read this operating manual carefully before you start working with the appliance.

Keep the operating manual in a safe place. Include the operating manual if you pass the appliance on to someone else.

Non-compliance with this operating manual can lead to serious injuries or damage to the appliance.

We take no responsibility for damage due to failure to comply with these operating instructions.

Important notes for your safety are specially marked. Always observe these notices to avoid accidents and damage to the appliance.

WARNING:

Warns of health hazards and indicates possible risks of injury.

CAUTION:

Warns of possible dangers to the appliance or other objects.

NOTE:

Highlights tips and information for you.

2 Safety instructions

2.2 Concerning users and certain groups of people



- This appliance is only allowed to be used by persons over the age of 18.

- Persons of 16 years of age and older are allowed to use the appliance in exceptional cases if they have been trained in the use of the appliance and are supervised by the owner.

- Users have to have been instructed in the use of the appliance.

- Users have to have read and understood the operating manual in full.

- Users have to know the dangers of using the appliance and know how to avoid them.

- Users have to be aware at all times. Users are not permitted to be tired or under the influence of medicinal or recreational drugs. Working under time pressure is also a threat to safety.

- Users must ensure that there is no one else in the working area.

Always work alone!

- This appliance is not intended to be used by persons (including children) with impaired physical, sensory or mental abilities or insufficient experience or knowledge, unless they are supervised by a person responsible for their safety or have been instructed in the proper use of the appliance by this person. Keep the appliance out of reach of people of these groups.

- Children should be supervised in order to make sure that they do not play with the appliance.

- Small screws and sharp cleaning needles are delivered with the appliance. Ensure that they cannot be reached by children.

2 Safety instructions

2.3 Concerning the power supply

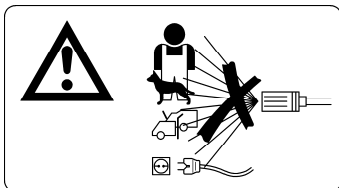


The appliance is operated with electrical power which means there is always a risk of electric shock. Consequently, particularly comply with the following instructions:

- Never touch the appliance plug with wet hands.
- Always pull directly at the appliance plug if you want to disconnect the appliance from the mains. Never pull the power cord, it might break.
- Take care that the power cord is not kinked, pinched, or rolled over and ensure it does not come into contact with heat sources.
- Only connect the appliance to 3-pole safety sockets.
- Never immerse the appliance in water or other liquids.
- Only operate the appliance if your mains voltage is the same as that indicated on the appliance's type plate. The wrong voltage can destroy the appliance.
- Only use extension cables whose plugs and sockets are water tight. In addition, extension cables must have a conductor cross section of at least 1.5 mm² (or 2.5 mm² from 10 m) and be designed for the power input of the appliance. The extension cable and the plug-in coupling must never be in puddles of water. Do not use multiple sockets or cable reels.
- If the power cord of this appliance is damaged, it must be replaced by the manufacturer, their authorised service representative or a similarly qualified person to avoid danger.
- Before you clean or maintain the appliance, switch off the appliance and pull the appliance plug from the socket.

2 Safety instructions

2.4 Concerning the jet of high-pressure produced



The high-pressure cleaner cleans using a jet of high pressure. This could indirectly or directly lead to injury. So please observe the following:

- Never direct the high-pressure jet at persons or animals.
- Never point the high-pressure jet at electric or electronic parts, especially not sockets.
- Only point a jet of high-pressure that is sufficiently spread at tyres and valves.
- Always hold the pistol with the attachment in the direction of the surface to be cleaned.
- Always look in the direction the pistol is pointing.
- If no water is coming out, never look into the attachment or the pistol to find the cause.
- Always ensure that the high-pressure hose — as well as the electricity cable — are not subjected to any loads. That means that the high-pressure hose must not come into contact with heat sources, oils or greases, be run over, bent, squashed or subjected to excessive pulling strain.
- Check the high-pressure hose before each use. Defective high-pressure hoses have to be replaced by our customer services.
- Always wear personal protective equipment, ▢ *Chapter 2.10, “Concerning the personal protective equipment required”.*
- Ensure that persons without personal protective equipment are not in the area of use.
- Prepare the location of use by removing loose objects such as stones, shards and the like.

2 Safety instructions

2.5 Concerning the noise produced



If the pump is in operation and water is exiting under high pressure, the appliance is very noisy. The jet of high pressure might also produce more noise as it hits the object/surface to be cleaned.

- Always wear hearing protection.
- Ensure that persons without personal protective equipment are not in the area of use.
- Comply with the regulations regarding quiet times and noise-producing machines at the location of use.

2.6 Regarding how to proceed in the case of a defective appliance



■ Turn off the appliance immediately if you notice strange sounds during operation or the high-pressure jet stutters or comes out in bursts.

■ Never use a defective appliance or operate an appliance with a defective power cord. If the power cord of the appliance is damaged, it must be replaced by the manufacturer, their authorised service representative, or a similarly qualified person to avoid danger.

■ Do not use the appliance if it has fallen down, has been submerged in water or has obvious signs of damage.

■ In each of these cases take the appliance to a specialist dealer or our customer services to be repaired (▷Page 64, “*International Service*”).

2 Safety instructions

2.7 Concerning intended use

■ The appliance is permitted to be used both domestically and commercially (high-pressure cleaner [M3300] only).

■ When used commercially there are many more statutory safety requirements on the protection of users, see ▷ *Chapter 2.11, “Concerning the obligations of the owner (for commercial use)”* and ▷ *Page 61, “Test protocol (for commercial use)”*.

Intended use of the high-pressure cleaner



CAUTION:

Danger of material damage! Not all materials and surfaces can withstand being cleaned with a jet of high pressure. Find out beforehand whether the surface can withstand the high pressure and water. Never clean objects where you are unsure whether they can withstand the load.

Only use the high-pressure cleaner to high-pressure clean surfaces and objects that can withstand the load of the jet of high pressure. The high-pressure cleaner could be use to:

- remove moss, algae and the like from pools, plaster and other stone floors, paths, driveways, etc;
- clean unsensitive garden furniture, grates, grills and the like;
- clean unsensitive vehicles, commercial vehicles, boats, caravans and the like;
- clean blinds, venetian blinds, greenhouses and unsensitive house facades and the like.

2 Safety instructions

Intended use of the wet/dry vacuum cleaner



■ Only use the wet/dry vacuum cleaner without the motor protection filter to vacuum up dirty water, ▷ *Chapter 5, “Wet vacuuming”*.

■ Only use the wet/dry vacuum cleaner with the motor protection filter inserted to vacuum up dry dirt, ▷ *Chapter 6, “Dry vacuum cleaning”*.

■ Only use the wet/dry vacuum cleaner with the motor protection filter inserted to blow out small amounts of dirt, ▷ *Chapter 7, “Using the vacuum cleaner as a blower”*.

2.8 Concerning predicted misuse



Only use the high-pressure cleaner and the wet/dry vacuum cleaner as intended, ▷ *Chapter 2.7, “Concerning intended use”*.

Any other use is considered inappropriate and is prohibited.

Particularly prohibited:

■ Use in the vicinity of explosive or highly-flammable substances and in explosive atmospheres. There is danger of fire or explosion.

■ To modify or repair the appliance yourself. There is a danger of injury.

■ Storage outdoors and at freezing temperatures or lower temperatures.

■ Operation of an appliance which is not mounted completely.

■ The operation of an appliance that will not stand up.

CAUTION:

Never connect cable reels or multiple sockets to the service socket of the high-pressure cleaner. Be sure to only connect appliances with a power consumption of less than 1,200 W to the service socket of the high-pressure cleaner.

2 Safety instructions

Misuse of the high-pressure cleaner



- Never direct the high-pressure jet at persons or animals. Never point the jet of high pressure at yourself or others to clean clothes or shoes. Injuries would inevitably be the result!
- Never point the high-pressure jet at electric or electronic parts, especially not sockets. There is a risk of electric shock!
- Never clean sensitive surfaces or parts like motors or bearings. The high-pressure jet will damage sensitive parts or water will penetrate where it should not.
- Never clean the high-pressure cleaner yourself with the high-pressure jet.
- Never block the spray button to prevent it from snapping back to the neutral position as soon as it is released.
- Never operate the high-pressure cleaner without an attachment being attached to the pistol.
- Never operate the high-pressure cleaner without it being connected to the water supply.
- Never connect the high-pressure cleaner to a drinking water mains without putting in a BA intermediate backflow preventer. If this does not help, seek professional help.
- Water that has flowed through a backflow preventer is not drinkable!
- Never suck in explosive, flammable or even slightly flammable liquids. Never spray flammable liquids. There is a risk of explosion!



2 Safety instructions

Misuse of the wet/dry vacuum cleaner



- Never vacuum clean people, animals, plants, or in particular hair, fingers and other body parts as well as clothing on the body. This could cause injury.
- Never vacuum up toner (for laser printers, copying machines, etc.). There is danger of fire or explosion.
- Never vacuum up hot ash, burning cigarettes or matches. This could cause a fire.
- Never vacuum up sharp objects such as glass shards, nails, etc. This could damage the appliance.
- Never insert both ends of the suction tube into both suction tube receptacles ('VACUUM' and 'BLOWER') at the same time.
- Never use the appliance unattended.

2.9 Concerning the safety equipment installed



Autostop: The pump stops as soon as the trigger is released.

Child protection device: The spray button cannot be operated in the 'depressed' position.

Overpressure valve/safety valve: Protects the high-pressure cleaner against overpressure.

Wet/dry vacuum cleaner motor protection filter: Switches off the suction engine when load is too great.

Wet/dry vacuum cleaner float: Blocks off the suction channel when the liquid level is too high.

2 Safety instructions

2.10 Concerning the personal protective equipment required

When using the high-pressure cleaner, the following personal protective equipment has to be worn:



- Face protection or safety goggles with side protection
- Hearing protection
- Water-resistant protective work suit
- Slip-safe safety shoes that protect feet from the high-pressure jet in emergencies

When using the wet/dry vacuum cleaner as a blower the following protective equipment has to be worn:



- Face protection or safety goggles with side protection



- Basic air mask

2 Safety instructions

2.11 Concerning the obligations of the owner (for commercial use)



- The owner is only allowed to get people to operate this appliance who are 18 years of age and older.
- Persons of 16 years of age and older are allowed to use the appliance in exceptional cases if they have been trained in the use of the appliance and are supervised by the owner.
- The owner must ensure that the personnel who work with the appliance are instructed about the dangers of using the appliance and the measures to avoid such dangers before they first use the appliance and then at least once a year.
- The owner must issue operating instructions for using the appliance and the dangers associated with it. If required, there are sample operating instructions for handling high-pressure cleaners/liquid sprayers on the Internet.
- The operating instructions must be made known to the employees in a suitable manner and be accessible to them at all times.
- The owner must make available to his personnel the protective equipment (▷ *Chapter 2.10, “Concerning the personal protective equipment required”*) required in perfect condition.
- The owner must also make available to his personnel suitable skin-protection, skin-cleansing and skin-care means.
- The owner is obligated to ensure that the appliance is safe to be worked with by making periodic checks. The appliance must also be checked by an expert once a year. This test has to be documented. The test protocol in the appendix of these operating instructions can serve as a template for this ▷ *Page 61, “Test protocol (for commercial use)”*.

3 Unpacking and assembling

3.1 Unpacking

1. Unpack the appliance and all its accessories.

 **WARNING:**

Danger of suffocation! Small parts such as screws are delivered with the appliance. Keep these parts away from children at all times as children could swallow them and suffocate.

 **WARNING:**

Danger of suffocation! The appliance is packaged in plastic film. Keep this away from children at all times as children could play with it and suffocate.

2. Check the contents for completeness and possible damage. Information regarding scope of delivery ▷ *Chapter 1.1, "Scope of delivery"*.

NOTE:

If you notice transport damage or if parts are missing, do not assemble the appliance. Instead immediately contact the dealer from whom you acquired the appliance or contact our customer service (▷ *Page 64, "International Service"*).

 **CAUTION:**

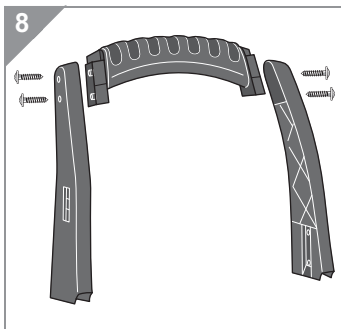
Always transport and ship the appliance in its original packaging to avoid damage. Keep the packaging for this purpose. Dispose of no longer needed packaging material according to the applicable regulations of your country.

3 Unpacking and assembling

3.2 Assembly

WARNING:

Danger of injury! Only assemble the appliance if it is not connected to the power supply. Otherwise the appliance could start up accidentally and cause injury.



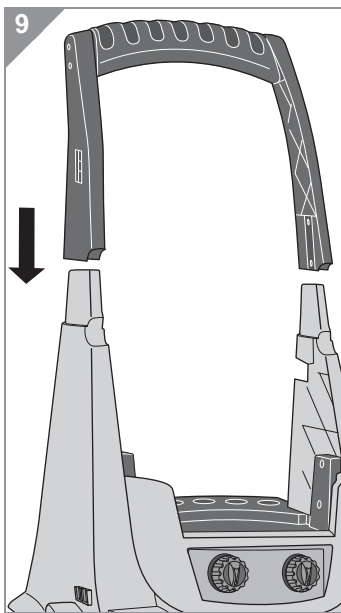
1. Mount the carrying handle by screwing in at the handle 2 of the screws delivered into each brace (Fig. 8).

NOTE:

Tighten the screws by hand.

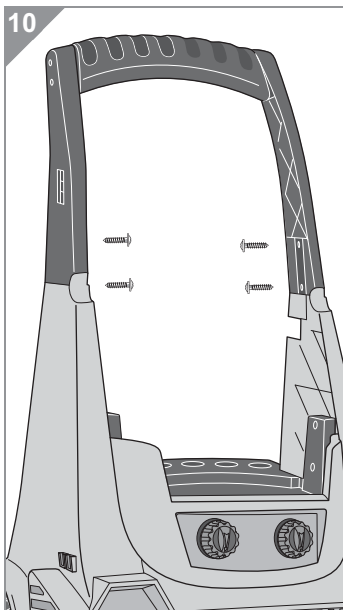
NOTE:

If you have not done so already, take the wet/dry vacuum cleaner up and out of its holder and put it to one side. The high-pressure cleaner is easier to assemble if the wet/dry vacuum cleaner has been removed beforehand.



2. Put the carrying handle you have just assembled firmly onto the two connecting pieces on the high-pressure cleaner (Fig. 9) until you can push no further.

3 Unpacking and assembling

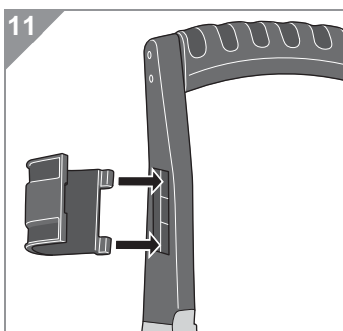


3. Screw on the carrying handle with two screws on each side (Fig. 10).

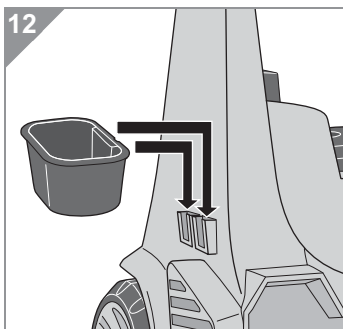
NOTE:

Tighten the screws by hand.

4. By gently lifting, check whether the carrying handle and high-pressure cleaner are securely fastened together.

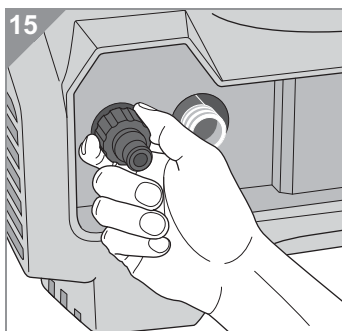
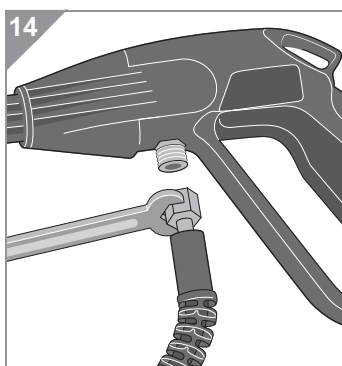
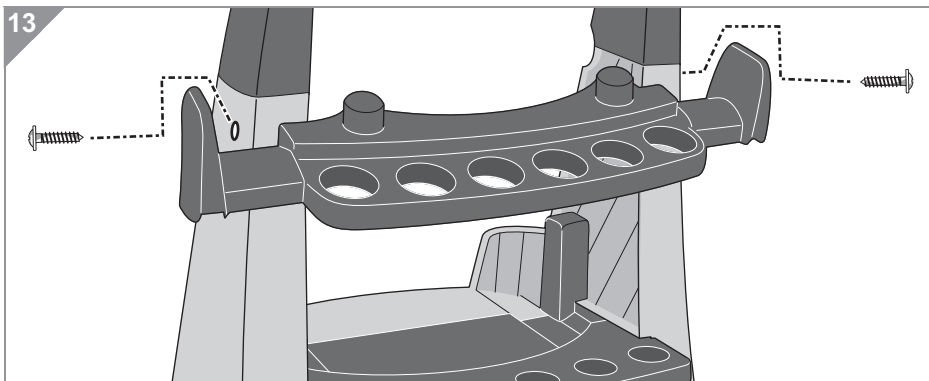


5. Put the upper pistol holder onto the carrying handle you have just mounted (Fig. 11).



6. Put the lower pistol holder onto the high-pressure cleaner as shown (Fig. 12).

3 Unpacking and assembling



7. Push the accessories console into the recesses on the back of the high-pressure cleaner (Fig. 13). Screw on tightly with one of the screws provided (Fig. 13).

NOTE:

Tighten the screws by hand.

8. Mount the high-pressure hose to the pistol using an open-end spanner (size: 17) (Fig. 14).
9. Mount the adapter of the quick connector to the appliance (Fig. 15) by screwing it on clockwise by hand until it is finger tight.

NOTE:

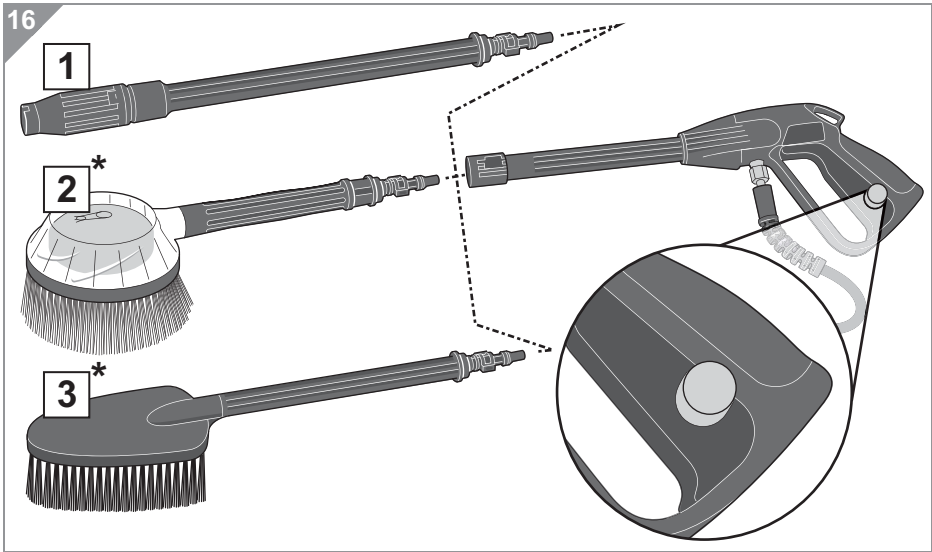
When doing so ensure that the filter screen (Fig. 2/8) has been inserted into the adapter and that it is clean.

4 High-pressure cleaning

4.1 Connecting attachments to pistol

WARNING:

Danger of injury! Mount the attachments only if the child protection device of the pistol is in the 'locked' position (Fig. 16/magnifier). Otherwise, water could exit under high pressure and cause injury.

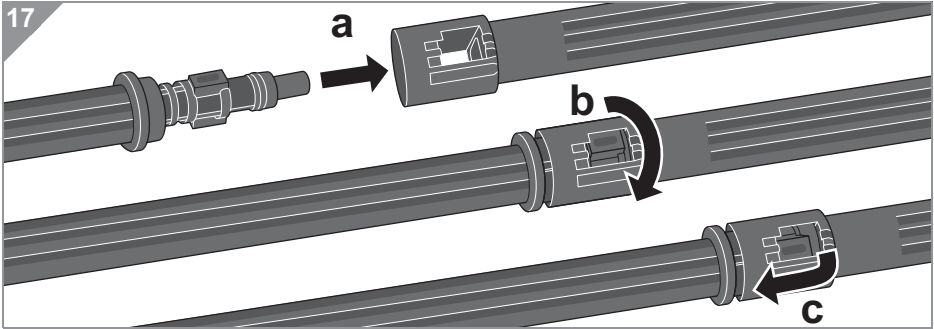


- 1 Lance with adjustable head for a concentrated jet or a broadly distributed spray angle, ▷ *Chapter 4.7, "High-pressure cleaning with the lance"*
- 2* Roto brush with rotating brush head (*optional) for scrubbing the surface at the same time ▷ *Chapter 4.8, "High-pressure cleaning with the brushes (optional)"*
- 3* Stiff brush (optional*) for scrubbing the surface by hand at the same time ▷ *Chapter 4.8, "High-pressure cleaning with the brushes (optional)"*

* depending on model and scope of delivery

4 High-pressure cleaning

All attachments are attached to the pistol in the same way:



1. Guide the lance/brush into the pipe connection of the pistol (Fig. 17/a).
2. Ensure that the lock appears in the window as shown (Fig. 17/b).
3. Rotate the lance/brush slightly and stop pushing as soon as the lock in the window locks into place as shown. The lock snaps into place (Fig. 17/c).
4. Ensure that the attachment and pistol are securely attached to one another by trying to pull them apart forcefully.

NOTE:

You can release the attachment again at any time by pushing it into the pipe connection of the pistol and then by rotating it (opposite to the arrow direction in Fig. 17).

⚠ WARNING:

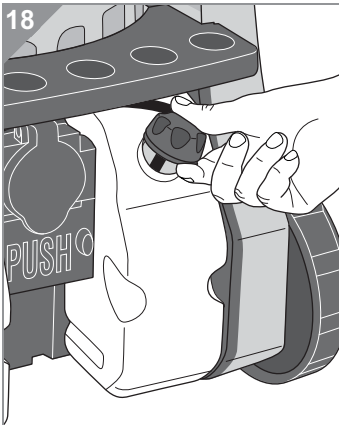
Danger of injury! Only release the attachment if the child safety device of the pistol is secured. Otherwise, water could exit under high pressure and cause injury.

4 High-pressure cleaning

4.2 Filling the cleaning agent tanks (only when required)

△ CAUTION:

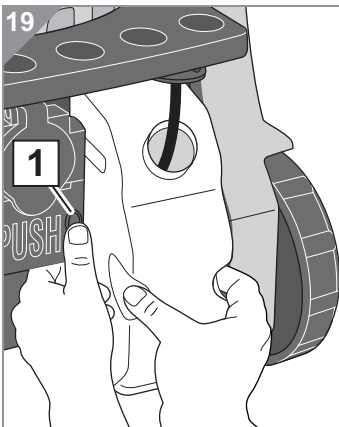
Danger of material damage! Only use cleaning agents which are expressly suited for use with high-pressure cleaners. Domestic cleaners, acids, soaps, bleaches, thinners, solvents, alcohol, flammable substances, mineral cleaning agents and cleaning agents containing solid matter could damage the integrated pump. Always comply with the instructions of the cleaning agent manufacturer. Many cleaning agents, for example, have to be thinned before they can be used.



1. If you have not done so already, pull the appliance plug from the socket.
2. Release the rubber lid of the cleaning agent tank (Fig. 18).
3. Push the 'PUSH' button on the back of the high-pressure cleaner (Fig. 19/1).
4. Take hold of the tank and pull it out of its holder whilst continuing to hold down the 'PUSH' button.
5. Fill the tank with cleaning agent.

NOTE:

If you want to be sure that nothing spills, use a funnel.



6. Push the tank back into its holder firmly. You will feel and hear it snap into place.
7. Thread the hose into the tank and pull the rubber lid over the tank.
8. Proceed in exactly the same way for the second cleaning agent tank.

The appliance is now ready for high-pressure cleaning with the addition of cleaning agent.

4 High-pressure cleaning

4.3 Selecting location of installation and area of use

WARNING:

Danger of injury for others! Ensure that there is no one else in the working area. Always work alone!

WARNING:

Danger of electric shock! Never submerge the appliance in water. Never put it in pools and the like. Never put the appliance down in puddles.


WARNING:

Danger of injury from the appliance falling! Be particularly careful in the area of stairs. When erecting the high-pressure cleaner, ensure that the high-pressure cleaner is not in the area of stairs. If, however, it is unavoidable, ensure that the appliance is always at the foot of the stairs. If putting the high-pressure cleaner on a step is unavoidable, ensure that you are always above the appliance. Otherwise the high-pressure cleaner could fall and take you with it.

WARNING:

Danger of falling! Place the high-pressure cleaner so that you cannot fall over the appliance, hoses or cables at any time. Ensure that you are in a secure position at all times. Remain on the ground. Do not climb onto ladders or the like to use the high-pressure cleaner.

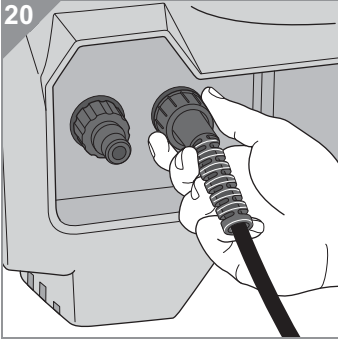
CAUTION:

Danger of material damage! We recommend removing stones, shards and the like from the area of use. These objects could be propelled and cause material damage. The wet/dry vacuum cleaner could aid you in this,  *Chapter 6, "Dry vacuum cleaning"*.

4 High-pressure cleaning

4.4 Connecting the high-pressure hose

To connect the high-pressure hose, proceed as follows:



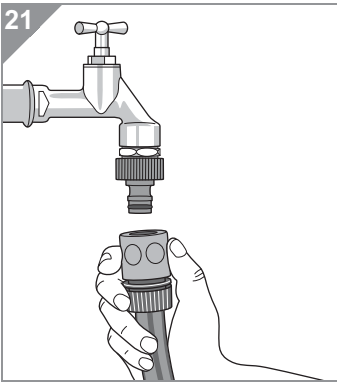
1. Put the high-pressure hose onto the water outlet.
2. Connect the high-pressure hose with the water outlet by tightening the retaining nut by hand until it is finger tight (Fig. 20).
3. Check that the high-pressure hose is fitted securely.
4. Proceed as described under [Chapter 4.5, "Connecting a garden hose \(not in the scope of delivery\)"](#).

4 High-pressure cleaning

4.5 Connecting a garden hose (not in the scope of delivery)

△ CAUTION:

Danger of material damage! Only connect the high-pressure hose to a garden hose that is connected to a service water line. Do not vacuum water from pools, barrels, containers and the like. On the one hand, the water quality would otherwise be insufficient, on the other, it avoids the danger of the pump running dry or getting blocked. Never connect the high-pressure cleaner to a drinking water mains without putting in a BA intermediate backflow preventer!

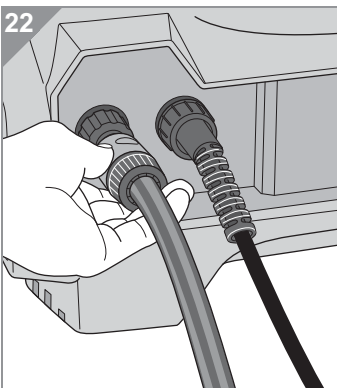


The garden hose (Fig. 21) has to meet the following requirements:

- free of knots, twists, loops
- clean on the inside
- at least 3 m, preferably 10 m
- Quick connector on the appliance side

The industrial water connection (Fig. 21) has to meet the following requirements:

- Water pressure: 0.16 – 0.6 MPa
- Water input temperature: max. 40 °C



1. First rinse out the garden hose to remove air and any dirt.
2. Close the service water connection.
3. Connect the garden hose with its quick coupling to the adapter on the high-pressure cleaner (Fig. 22).
4. Without turning on the high-pressure cleaner, press the spray button on the pistol until a continual, thin stream of water comes out.
5. Release the spray button.
6. Proceed as described under ▷Chapter 4.6, "Connecting the appliance plug to the power supply".

4 High-pressure cleaning

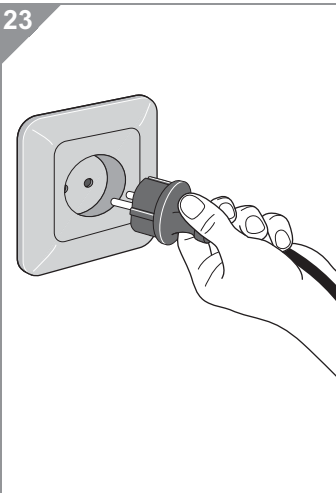
4.6 Connecting the appliance plug to the power supply

WARNING:

Danger of electric shock! Even if the socket is equipped with the following safety equipment, the following rules concerning electricity use must be complied with to minimise the risk of an electric shock.

- Never touch the appliance plug with wet hands.
- Always pull directly at the appliance plug if you want to disconnect the appliance from the mains. Never pull the power cord, it might break.
- Take care that the power cord is not kinked, pinched, or rolled over and ensure it does not come into contact with heat sources.
- The extension cable and the plug-in coupling must never be in puddles of water. Do not use multiple sockets or cable reels.
- If the power cord of the appliance is damaged, it must be replaced by the manufacturer, their authorised service representative, or a similarly qualified person to avoid danger.
- Do not pull at the cable when working. If the length of the power cable is insufficient, use another socket.

23



The socket (Fig. 23) must meet the following requirements:

- 220-240 V~, 50 Hz
- proper earthing, safety contact
- FI fault current protective circuit breaker 30 mA
- protected by 16 A (inert) mains side

If using an extension lead is unavoidable, then it must meet the following requirements:

- all requirements for the socket (see above)
- water-tight connection
- conductor cross section of at least 1.5 mm²
- 2.5 mm² for a length of 10 m and greater

4 High-pressure cleaning

4.7 High-pressure cleaning with the lance

WARNING:

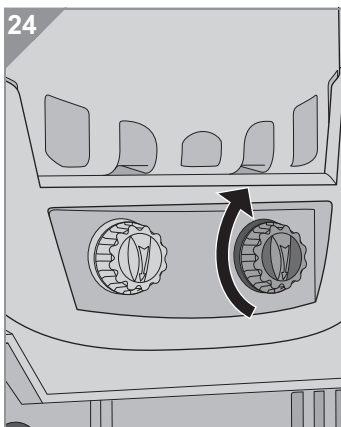
Danger of injury! Keep aware! Even if using the appliance seems easy to you or you are using the high-pressure cleaner from the nth time, proceed carefully and comply with the following rules when using the appliance.

- Never direct the lance at persons or animals.
- Always hold the lance in the direction of the surface to be cleaned.
- Always look in the direction the lance is pointing.
- Wear protective goggles with side protection.
- If no water is coming out, never look into the attachment or the pistol to find the cause.

CAUTION:

Danger of material damage! Not all materials and surfaces can withstand being cleaned with a jet of high pressure.

- Find out beforehand whether the surface can withstand the high pressure and water.
- Never clean sensitive surfaces or parts like motors or bearings with a jet of high pressure.
- Never clean objects where you are unsure whether they can withstand the load.



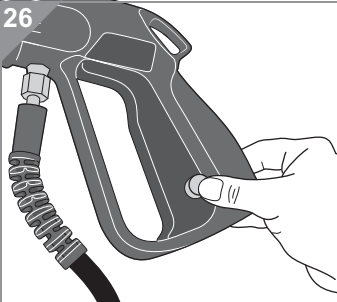
1. Check that the appliance, appliance plug, hoses and lines are impermeable.
2. Check whether the garden hose is connected correctly and whether its water supply is turned on.
3. Turn on the high-pressure cleaner using the on/off switch (Fig. 24). Turn the on/off switch clockwise into the left position.

4 High-pressure cleaning

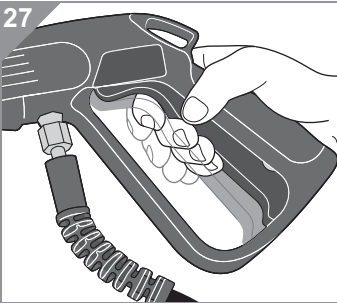
25



26



27

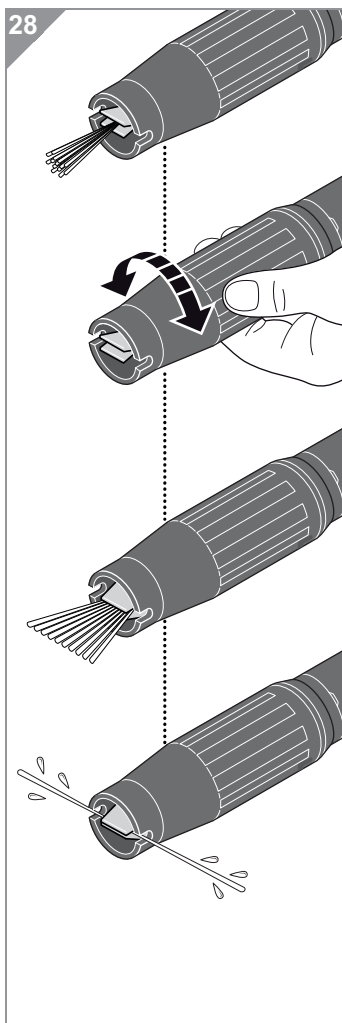


4. Ensure that you are standing securely (Fig. 25).
5. Unlock the child safety by pushing it in (Fig. 26).
6. Prepare yourself for the recoil of the pistol when you press the spray button.
7. Point the pistol and attachment towards the surface to be cleaned. Choose a large distance to begin with.
8. Press the spray button (Fig. 27).
 - You will hear the pump start up.
 - Immediately following this air will be expelled and directly after comes the high-pressure jet.

NOTE:

If a high-pressure jet does not come out, read [Chapter 10.1, "Correcting problems with the high-pressure cleaner"](#).

4 High-pressure cleaning



9. Carefully set the spray angle by rotating the spray head of the lance (Fig. 28).

⚠ CAUTION:

To take care of the material, we recommend not concentrating the jet of high pressure right from the start. Instead begin with a wide angle and only concentrate the jet if it does not damage the surface.

NOTE:

You can also influence the cleaning effect by adjusting the distance to the surface to be cleaned. A distance of 25–50 cm is a good guideline.

NOTE:

When adjusting the spray head, the spray angle quickly assumes the maximum width of 180° above a certain setting (Fig. 28/ below).

You can now clean the dirty surface using the high-pressure jet.

NOTE:

As soon as you release the spray button, the pump stops working and a jet of high pressure no longer comes out.

⚠ WARNING:

Danger of injury! Keep aware! Even when the pump is not running, there is high pressure in the system. If you want to end work, switch off the appliance and use up the remaining pressure. Also observe the instructions under [▷ Chapter 4.10, "After high-pressure cleaning"](#).

4 High-pressure cleaning

4.8 High-pressure cleaning with the brushes (optional)

△ CAUTION:

Danger of material damage! Consider that despite the soft brushes, grains of sand and similar material could cause scratches. Generally refrain from high-pressure cleaning sensitive surfaces!

NOTE:

If you soak the dirt before high-pressure cleaning, the high-pressure cleaning is faster.



The brushes with their soft bristles are ideal for the high-pressuring cleaning of:

- commercial vehicles, caravans, boats
- car wheel rims, greenhouses (Fig. 29)
- Venetian blinds, roller blinds (Fig. 30)

Proceed as follows to use the brushes efficiently:

1. Moisten the surface to be cleaned using the lance and a wide spray angle, ▷ *Chapter 4.7, "High-pressure cleaning with the lance"*.
2. If required, you can already use cleaning agent, ▷ *Chapter 4.9, "Applying cleaning agent"*.
3. Now allow the dirt to soften for 5–10 minutes.
4. Put on one of the two optional brushes, ▷ *Chapter 4.1, "Connecting attachments to pistol"*.
5. Clean the partially dissolved dirt using the brush.
6. If required, add cleaning agent again, ▷ *Chapter 4.9, "Applying cleaning agent"*.



4 High-pressure cleaning

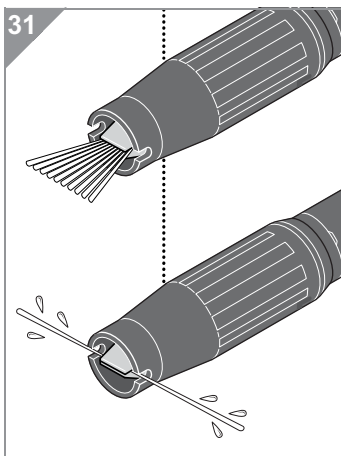
4.9 Applying cleaning agent

△ CAUTION:

Protect the environment! Always only use the quantity of cleaning agent that you actually require.

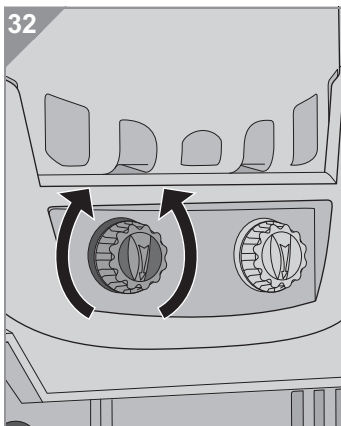
NOTE:

If you soak the dirt with cleaning agent before high-pressure cleaning, cleaning is faster.



Apply cleaning agent over a broad area (to soften dirt before cleaning):

1. Assemble the lance, ▷Chapter 4.1, “Connecting attachments to pistol”.
2. Set the lance so that the spray angle is wide or at the maximum setting (Fig. 31).
3. Turn the control knob of the tank filled with cleaning agent (Fig. 32).
4. Moisten the surface to be cleaned with a cleaning-agent-water mix.
5. Allow the mix to work for 5–10 minutes and then clean as before with the high-pressure jet.

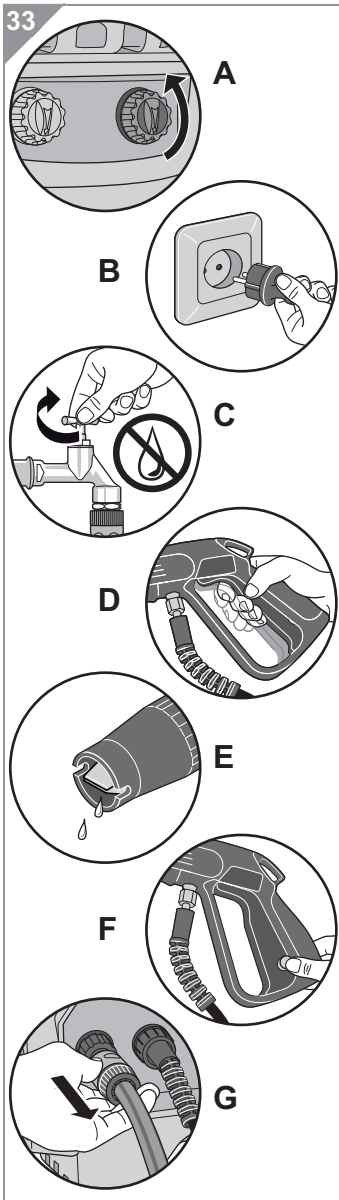


Adding cleaning agent whilst high-pressure cleaning:

1. Turn the control knob of the tank filled with cleaning agent (Fig. 32).
2. If it is obvious that no more cleaning agent is being discharged, the selected tank is empty. Switch to the other tank (Fig. 32).
3. If this tank is also empty, refill the tanks, ▷Chapter 4.2, “Filling the cleaning agent tanks (only when required)”.

4 High-pressure cleaning

4.10 After high-pressure cleaning



WARNING:

Danger of injury due to pressure reserves! Always keep to this action sequence so that pressure reserves can be reduced purposefully. You can avoid injuries in this way.

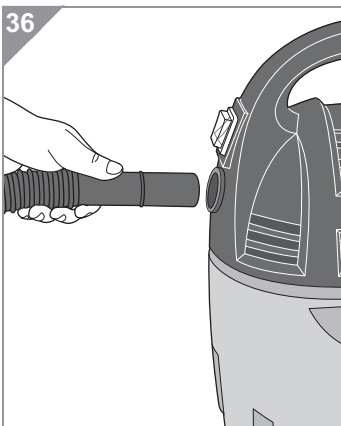
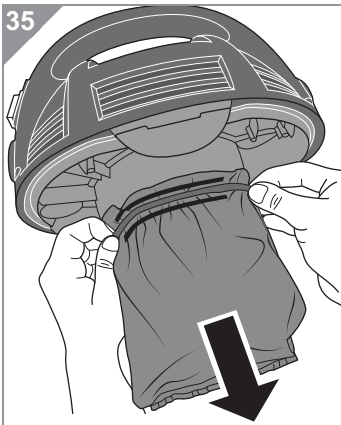
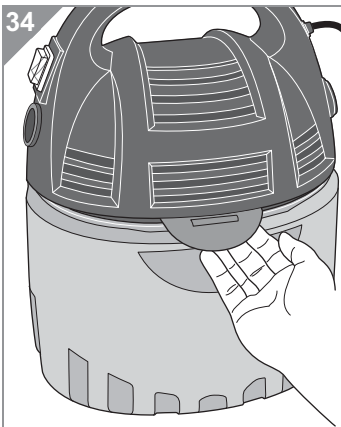
CAUTION:

Possible device damage! Always keep to this sequence of actions so that as little water as possible remains in the appliance. Water degenerates and makes the appliance age faster.

1. Turn off the high-pressure cleaner using the on/off switch. Turn the on/off switch anti-clockwise into the central position (Fig. 33/A).
2. Pull out the device plug (Fig. 33/B).
3. Point the pistol with the attachment onto the surface to be cleaned again and press the spray button (Fig. 33/D). This is how you can purposefully reduce the pressure reserves. Expel the water until just a little water comes out (Fig. 33/E).
4. Turn off the water supply that feeds the garden hose (Fig. 33/C).
5. Point the pistol with the attachment onto the surface to be cleaned again and press the spray button (Fig. 33/D). This is how you can purposefully reduce the pressure reserves. Expel the water until no more water comes out (Fig. 33/E).
6. Lock the child safety of the pistol (Fig. 33/F).
7. Release the garden hose from the high-pressure cleaner by pulling the quick connector towards you (Fig. 33/G).

5 Wet vacuuming

5.1 Before wet vacuuming



So that you can use the wet/dry vacuum cleaner, the motor protection filter is not permitted to be attached.

Therefore, proceed as follows to ensure that the motor protection filter is not installed or to remove it:

1. If you have not done so already, turn the appliance off and pull the appliance plug from the socket.
2. Release the motor unit from the dirt tank by bending both retaining clips upwards (Fig. 34, rear retaining clip covered).
3. Take the motor unit up out of the dirt tank.
 - If the motor protection filter is installed, pull it together with the rubber band from the motor cage (Fig. 35).
 - If a motor protection filter is not installed, you can put the motor unit directly back on.
4. Put the motor unit powerfully onto the dirt tank until you can hear and feel both retaining clips snap into place.

NOTE:

It does not matter the direction in which the on/off switch is pointing.

5. If you have not done so already, insert the suction hose into the connecting piece at the motor unit that is marked with 'VACUUM' (Fig. 36).

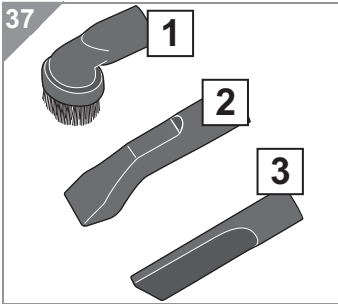
5 Wet vacuuming

5.2 Selecting and fitting suction nozzle

NOTE:

If required, you can also use the suction tube without any suction nozzle.

There are three suction nozzles delivered that can be used for certain cleaning tasks:



■ **Furniture brush (Fig. 37/1):** Use this to vacuum dust off objects that have sensitive surfaces.

■ **Universal nozzle (Fig. 37/2):** Use this to vacuum up large quantities of dirt when wet and dry vacuuming.

■ **Crevice nozzle (Fig. 37/3):** Use these accessories to vacuum dust from hard to reach places.

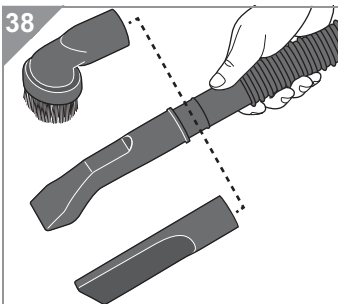
Proceed as follows to attach the suction nozzles:

⚠ WARNING:

Danger of injury! Only attach the suction nozzles if the appliance plug is not connected to the power supply. Otherwise the machine might start up and parts of your body, hair or pieces of clothing might be sucked in.

⚠ CAUTION:

Only use undamaged suction nozzles. Defective suction nozzles may scratch or damage surfaces and objects.



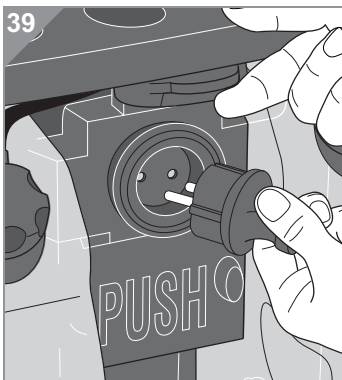
1. If a suction nozzle is still installed, pull it off.
2. Put the desired suction nozzle onto the free end of the suction hose (Fig. 38).
3. When putting on the suction nozzle, push firmly and rotate back and forth to ensure it is securely in place.


5 Wet vacuuming

5.3 Switching on and wet vacuuming

WARNING:

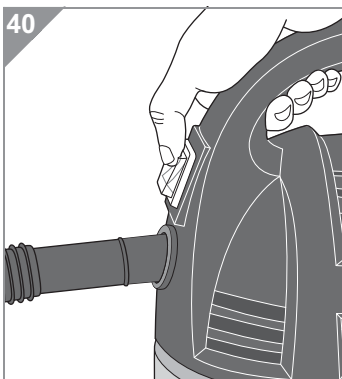
Danger of injury! A damaged or incompletely installed appliance must never be used. Check the wet/dry vacuum cleaner and the power cord before each use.



1. If required, put on a suction nozzle,  Chapter 5.2, "Selecting and fitting suction nozzle".
2. Insert the appliance plug into a socket with ground/safety contact.

NOTE:

You can also connect the wet/dry vacuum cleaner to a service socket of the high-pressure cleaner (Fig. 39). The 3x on/off switch of the high-pressure cleaner (Fig. 3/7) has to be in the right position for this. Only then is the service socket supplied with electricity.



3. Switch on the wet/dry vacuum cleaner using the on/off switch (Fig. 40).
4. Now vacuum up the dirty water and damp dirt.

CAUTION:

Danger of motor damage! If the float is blocking the suction channel, switch off the appliance immediately. If you continue to operate the machine anyway, the motor will be damaged.

NOTE:

The wet/dry vacuum cleaner has an integrated float, that blocks the suction channel once the dirt tank has too much dirty water. If the float triggers, noise coming from the motor becomes much higher and louder. Switch the appliance off then, pull the appliance plug from the socket and empty the dirt tank (see below).

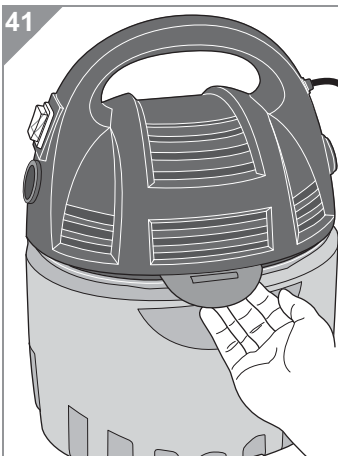
5 Wet vacuuming

5.4 Switching off and emptying the dirt tank

WARNING:

Danger of injury! Switch off the appliance and pull the appliance plug from the socket before disassembling the appliance.

- It is best to empty the dirt container after every vacuuming session.
- Empty the dirt tank at the latest if dirt comes out of the appliance or floats or the overheating protection has triggered.



1. Switch the appliance off and pull the appliance plug out of the socket.
2. Release the motor unit from the dirt tank by bending both retaining clips upwards (Fig. 41, rear retaining clip covered).
3. Take the motor unit up out of the dirt tank.

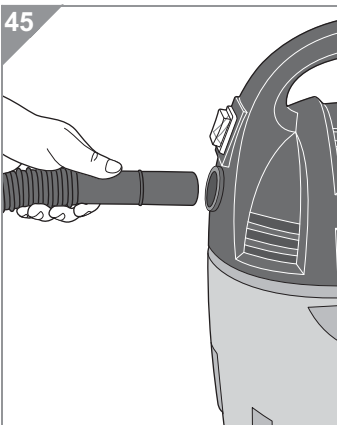
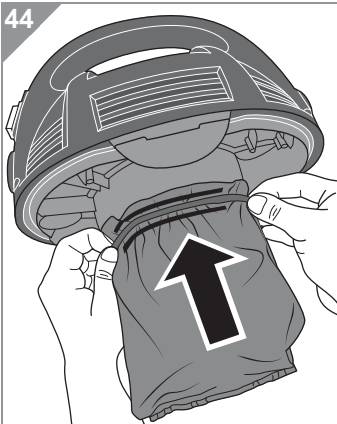
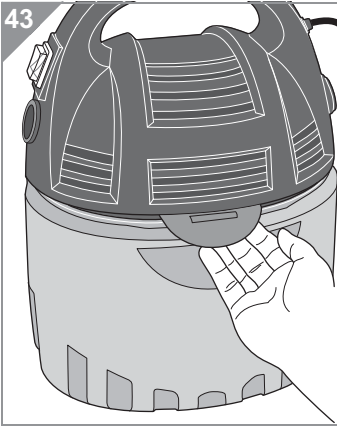
NOTE:

You can dispose of the content of the dirt tank over a dustbin, a toilet or the sewage system as long as the dirt is not toxic.

4. Dispose of the content of the dirt tank over a dustbin (Fig. 42), a toilet or the sewage system depending on how much liquid it contains.
5. Clean the dirt tank if necessary.
6. Also clean the motor protection filter on this occasion, ▸ *Chapter 9.4, "Cleaning/changing the motor protection filter of the vac"*.
7. Put the motor unit powerfully onto the dirt tank until you can hear and feel both retaining clips snap into place.

6 Dry vacuum cleaning

6.1 Before dry vacuum cleaning



So that you can use the wet/dry vacuum cleaner as a dry vacuum cleaner, the motor protection filter must be attached. Therefore, proceed as follows to ensure that the motor protection filter is installed correctly.

1. Switch the appliance off and pull the appliance plug out of the socket.
2. Release the motor unit from the dirt tank by bending both retaining clips upwards (Fig. 43, rear retaining clip covered).
3. Take the motor unit up out of the dirt tank.

■ If the motor protection filter is installed and intact, you can put the motor unit directly back on.

■ If the motor protection filter is damaged, replace it ▷ *Chapter 9.4, "Cleaning/changing the motor protection filter of the vac"*.

■ If no motor protection filter is installed, pull a dry, clean filter with rubber band over the motor cage (Fig. 44). Align the rubber band so that it is between both the lines and as close to the basis as possible.

⚠ CAUTION:

Use the dry/wet vacuum cleaner for dry cleaning only if an intact motor protection filter is installed correctly.

4. Put the motor unit including the motor protection filter powerfully onto the dirt tank until you can hear and feel both retaining clips snap into place.
5. If you have not done so already, insert the suction hose powerfully into the connecting piece at the motor unit that is marked with 'VACUUM' (Fig. 45).

6 *Dry vacuum cleaning*

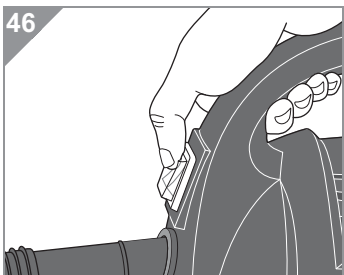
6.2 Switching on and dry vacuuming

WARNING:

Danger of injury! A damaged or incompletely installed appliance must never be used. Check the device and its power cord before every use.

WARNING:

Danger of injury! Be particularly careful when vacuuming stairs. Hold the appliance by hand when vacuuming stairs. Though if you do put it down, make sure that it is always at the foot of the stairs. If putting the cleaner on a step is unavoidable, ensure that you are always above the appliance. Otherwise it could fall and take you with it.



1. Push on the desired suction nozzle, *▷Chapter 5.2, “Selecting and fitting suction nozzle”.*
2. Insert the appliance plug into a socket with ground/safety contact.
3. Switch on the wet/dry vacuum cleaner using the on/off switch (Fig. 46).
4. Now vacuum up the dry dirt.

NOTE:

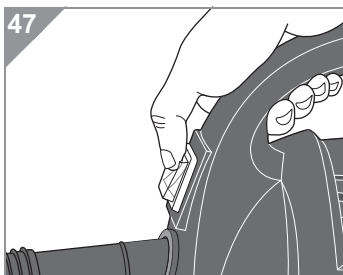
If you vacuum up very fine dirt, we recommend emptying the dirt tank more often than usual, *▷Chapter 5.4, “Switching off and emptying the dirt tank”.*

NOTE:

Your wet/dry vacuum cleaner has an integrated protective function that triggers before the appliance can overheat (e. g. due to an overfilled dirt tank). If this protective function triggers, the suction power is considerably reduced and the motor sound sounds much louder and higher. Switch the appliance off then, pull the appliance plug from the socket and remove the cause of the overheating. You can then turn the clean, fully-assembled vacuum cleaner back on.

6 *Dry vacuum cleaning*

6.3 After dry vacuum cleaning



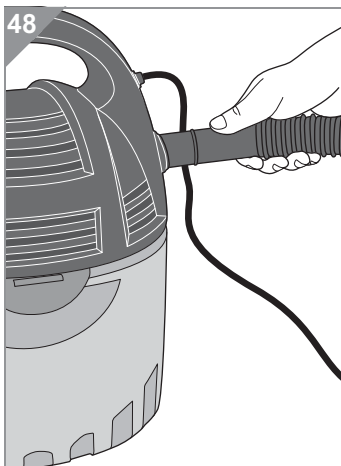
1. Switch off the wet/dry vacuum cleaner with the on/off switch (Fig. 47) and pull the plug from the mains socket.
2. Empty the dirt tank, ▷ *Chapter 5.4, “Switching off and emptying the dirt tank”*.
3. Clean the motor protection filter, ▷ *Chapter 9.4, “Cleaning/changing the motor protection filter of the vac”*.

7 Using the vacuum cleaner as a blower

7.1 Re-equipping from a dry vacuum cleaner to a blower

NOTE:

If you want to use the vacuum cleaner as a blower, the motor protection filter has to be installed. If you are unsure as to whether the motor protection filter is actually installed, proceed as described in ▷Chapter 6.1, “Before dry vacuum cleaning”.

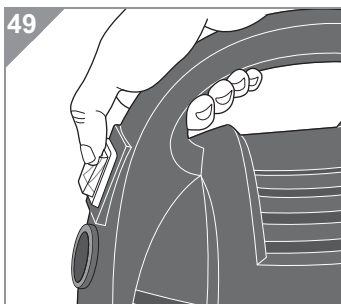


1. Switch the appliance off and pull the appliance plug out of the socket.
2. If you have not done so already, empty the dirt tank ▷Chapter 5.4, “Switching off and emptying the dirt tank” and clean the motor protection filter, ▷Chapter 9.4, “Cleaning/ changing the motor protection filter of the vac”.
3. Release the suction hose from the nozzle at the motor unit that is marked with ‘VACUUM’.
4. Insert the suction hose powerfully into the connecting piece at the motor unit that is marked with ‘BLOWER’ (Fig. 48).

7.2 Blowing out dirt

⚠ WARNING:

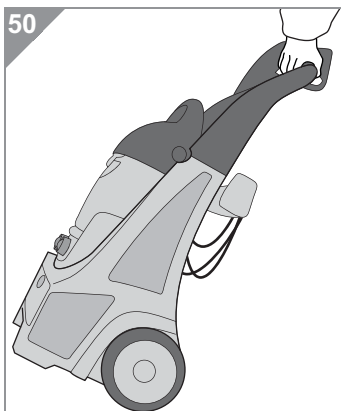
Danger of injury! If you are going to use the vacuum cleaner as a blower, always wear protective goggles with side protection. If you are also going to blow out particulate matter, you also have to wear a basic air mask.



1. Switch on the wet/dry vacuum cleaner using the on/off switch (Fig. 49).
2. Hold the appliance in one hand and the free suction hose end in the other and blow out the dirt.
3. After finishing the work, switch off the wet/dry vacuum cleaner using the on/off switch (Fig. 49).

8 Transport and storage

8.1 Transporting

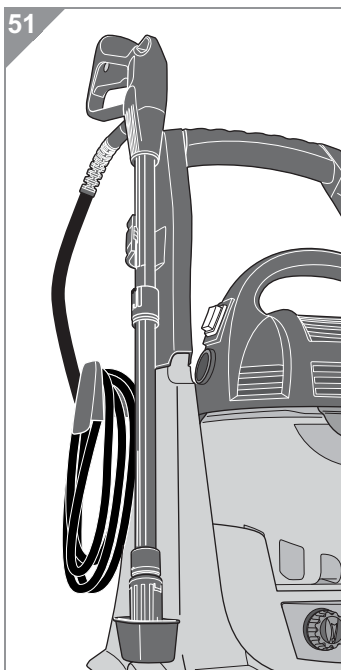


- You can carry the wet/dry vacuum cleaner by its (Fig. 5/1) carry handle.
- You can hold the high-pressure cleaner by the carry handle and pull it behind you (Fig. 50).

⚠ WARNING:

Danger of injury! Do not carry the high-pressure cleaner. With the integrated vacuum cleaner and full cleaning agent tanks it can reach a considerable weight (> 15 kg). There is the danger of underestimating its weight and injuring yourself. Moving the appliance from place to place is better.

8.2 Storage



1. Empty the dirt tank, ▷ *Chapter 5.4, "Switching off and emptying the dirt tank"*.
2. Clean the motor protection filter and reattach it, ▷ *Chapter 9.4, "Cleaning/changing the motor protection filter of the vac"*.
3. Hang the cable, hoses, accessories and the pistol with lance into the holders intended for this (Fig. 51).
4. Put the appliance down in a location that meets the following requirements:
 - cool, but free of ice and frost
 - dry
 - resistant to leakage water
 - inaccessible to children

⚠ CAUTION:

Put the appliance down so that it cannot come into contact with oils, greases, petrol and the like at any time. These materials damage the material of the appliance.

9 Maintaining the appliance

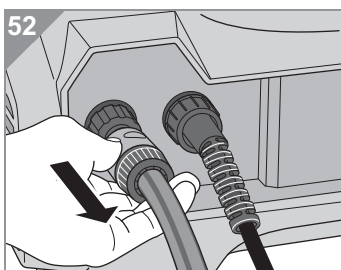
9.1 Maintaining the filter screen of the high-pressure cleaner

WARNING:

Danger of injury! Switch the appliance off and pull the appliance plug out of the socket. Release pressure reserves by holding down the spray button until no more water comes out. You can avoid injuries in this way.

CAUTION:

Danger of material damage! Consider that there is still water in the garden hose. Disassemble the garden hose outside.



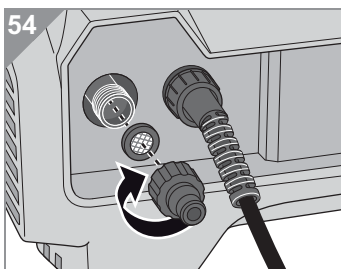
1. Release the garden hose from the high-pressure cleaner by pulling the quick connector towards you (Fig. 52).
2. Twist off the adapter of the quick coupling from the high-pressure cleaner (Fig. 53).

NOTE:

If you cannot release the adapter using your hands alone, carefully use pipe tongs.

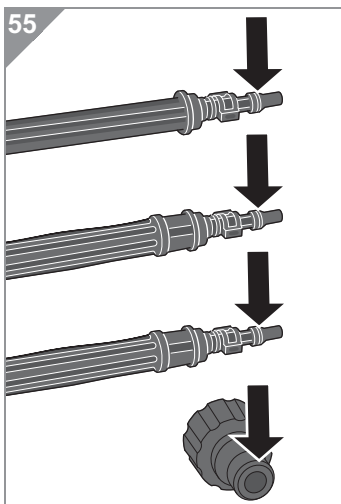


3. Allow plenty of water to flow through the large opening of the adapter.
 - If this is not enough, pull the filter screen out of the adapter (Fig. 54).
 - Clean the filter screen thoroughly using a brush with plastic bristles.
 - It might also be necessary to decalcify the screen.
 - If the dirt is stubborn or if there is a defect, you have to replace the screen, ▸ *Chapter 10.3, "Accessories, spare parts and reference sources"*.
 - Now put the filter screen back in.
4. Screw the adapter back onto the high-pressure cleaner until finger tight (Fig. 53).



9 Maintaining the appliance

9.2 Replace sealing rings



The lance, both brushes and the adapter of the quick coupling each have a sealing ring (Fig. 55). If the sealing ring is obviously damaged, then it has to be replaced.

Four sealing rings are delivered for this purpose. Proceed as follows to replace the sealing rings:

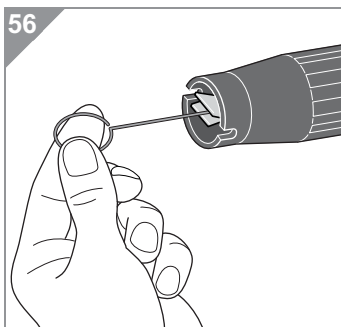
1. If you have not done so already, release the attachment from the pistol or the adapter from the high-pressure cleaner.
2. Split the worn sealing ring with a sharp knife being careful not to damage the surrounding plastic.
3. Pull over the new sealing ring. It should slide into the groove completely.

9.3 Cleaning the lance

Use the cleaning needle supplied to free the lance of deposits.

WARNING:

Danger of injury! The cleaning needle is sharp! Work carefully with it and make particularly sure that it does not fall into the hands of children.



1. If you have not done so already, release the lance from the pistol.
2. Push the cleaning needle into the lance (Fig. 56) and unblock the channel of calcium carbonate deposits and dirt.

NOTE:

If you lose the cleaning needle, you can use a straightened paper clip instead.

9 Maintaining the appliance

9.4 Cleaning/changing the motor protection filter of the vac

WARNING:

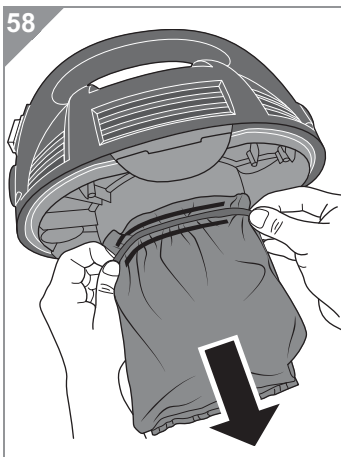
Danger of injury! Before you clean or maintain the appliance, switch off the appliance and pull the appliance plug from the socket.

- Check the motor protection filter each time you empty the dirt tank.
- Replace the motor protection filter as soon as it is damaged.



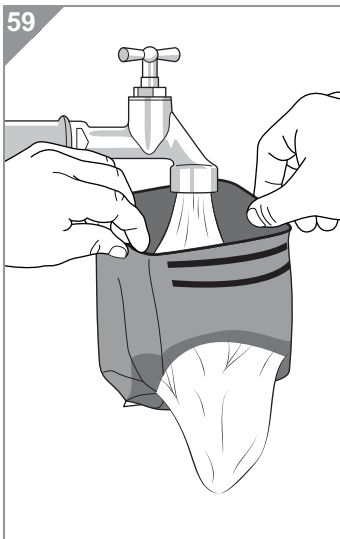
Proceed as follows to ensure that the motor protection filter is always clean and intact:

1. If you have not done so already, turn the appliance off and pull the appliance plug from the socket.
2. Release the motor unit from the dirt tank by bending both retaining clips upwards (Fig. 57, rear retaining clip covered).
3. Take the motor unit up out of the dirt tank.



4. Pull off the motor protection filter including the rubber belt from the motor cage (Fig. 58).

9 Maintaining the appliance

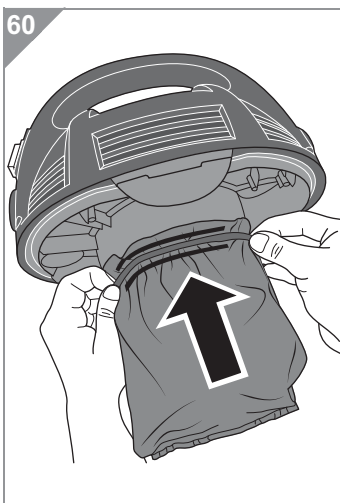


- If the motor protection filter is dirty, rinse it out thoroughly under cold running water (Fig. 59) until only clear water comes out. If you want to dry vacuum after this, then allow the motor protection filter to dry for at least 24 hours at room temperature.

△ CAUTION:

The filter can be washed, but it is unsuitable for washing machines. Only put the filter back in for dry vacuuming once it is completely dry.

- If the motor protection filter is damaged, replace it with a new one, ordering information ▷ *Chapter 10.3, "Accessories, spare parts and reference sources"*.



5. Put the new/cleaned motor protection filter onto the motor cage so that it completely covers the motor cage (Fig. 60).
6. Align the rubber band so that it is between both the lines and as close to the basis as possible (Fig. 60).

△ CAUTION:

If the filter is not correctly in place, dirt can come out of the appliance.

7. Put the motor unit including the motor protection filter powerfully onto the dirt tank until you can hear and feel both retaining clips snap into place.

9 *Maintaining the appliance*

9.5 **Cleaning the housing**

 **WARNING:**

Danger of injury! Before you clean or maintain the appliance, switch off the appliance and pull the appliance plug from the socket.

 **CAUTION:**

Do not use cleaning or scouring agents, solvents or alcohol, as these might damage the appliance's housing.

- Only clean the outside of the housing using a slightly damp cloth.

10 Correcting problems

WARNING:

Danger of injury! Never use a defective appliance! Always switch off the appliance and disconnect it from the mains before starting troubleshooting.

Before contacting or even sending the appliance to us, use the following table to check whether you can correct the problem yourself.

10.1 Correcting problems with the high-pressure cleaner

Problem	Possible cause	Solution
The high-pressure cleaner will not start even though the spray button is depressed.	The appliance is switched off.	Turn on the appliance using the On/Off switch.
	You have too many consumers connected to the mains. The high-pressure cleaner requires an electric circuit for itself.	Connect the high-pressure cleaner to an electric circuit on which there are no other consumers.
The pump is not running.	The appliance is not connected to the water supply or the tap of the water supply is not on.	Connect the appliance to a garden hose, ▶ <i>Chapter 4.5, "Connecting a garden hose (not in the scope of delivery)"</i> . Turn on the water tap.
	The appliance is attached to the water supply, but it is too weak.	The water pressure of your water supply is too weak. Talk to your supplier.
	There is air in the water circuit.	Bleed the water circuit.
	The pump is defective.	Contact your dealer.

10 Correcting problems

Problem	Possible cause	Solution
A jet of water does come out but it is too weak.	The diameter of your garden hose is too small.	Choose a garden hose with a larger diameter. See the information in ▷Chapter 4.5, “Connecting a garden hose (not in the scope of delivery)” concerning this.
	The appliance is attached to the water supply, but it is too weak.	The water pressure of your water supply is too weak. Talk to your supplier.
	There is air in the water circuit.	Bleed the water circuit.
	The filter screen in the adapter of the quick coupling is clogged.	Clean the filter screen ▷Chapter 9.1, “Maintaining the filter screen of the high-pressure cleaner”.
	The attachments leak due to a damaged sealing ring.	Replace the sealing ring with a new one, ▷Chapter 9.2, “Replace sealing rings”.
	The lance is blocked.	Clean the lance using the cleaning needle supplied, ▷Chapter 9.3, “Cleaning the lance”.
Cleaning agent is not being added.	The control knob for adding cleaning agent is in the ‘OFF’ position.	Turn on the control knob for adding cleaning agent.
	The cleaning agent tanks are empty.	Fill the tanks with cleaning agent, ▷Chapter 4.2, “Filling the cleaning agent tanks (only when required)”.
The lance is leaking.	The sealing ring is damaged.	Replace the sealing ring with a new one, ▷Chapter 9.2, “Replace sealing rings”.

NOTE:

If you cannot solve the problem using this table, contact our customer service department (▷Page 64, “International Service”) and describe the problem to us.

10 Correcting problems

10.2 Correcting problems at the wet/dry vacuum cleaner

Problem	Possible cause	Solution
Appliance suddenly sets suction power back to minimum.	The integrated overheat protection has tripped (possibly due to blocked suction channels, filters, or similar).	Switch the appliance off and pull the appliance plug out of the socket. Eliminate the cause of overheating (e. g. remove blockage and/or empty dirt tank). Wait for about 45 minutes. After the appliance has cooled off, you may switch it on again.
	The integrated float has triggered due to the level of the dirty water in the dirt tank being too high.	Empty the dirt tank, ▷ <i>Chapter 5.4, "Switching off and emptying the dirt tank"</i> .
The cleaning results are unsatisfactory in spite of the appliance working correctly.	The dirt tank is full.	Empty the dirt tank, ▷ <i>Chapter 5.4, "Switching off and emptying the dirt tank"</i> .
	The motor protection filter is dirty.	Clean the motor protection filter, ▷ <i>Chapter 9.4, "Cleaning/changing the motor protection filter of the vac"</i> .
	Suction nozzle or suction hose are blocked.	Remove the obstruction.
Dust comes out.	The motor unit has not been put on properly.	Put the motor unit powerfully onto the dirt tank until you can hear and feel both retaining clips snap into place.
	The motor protection filter has not been inserted when dry vacuum cleaning.	Change/clean the motor protection filter, ▷ <i>Chapter 9.4, "Cleaning/changing the motor protection filter of the vac"</i> .
	The motor protection filter has been inserted, but is damaged.	Change the motor protection filter, ▷ <i>Chapter 9.4, "Cleaning/changing the motor protection filter of the vac"</i> .

NOTE:

If you cannot solve the problem using this table, contact our customer service department (▷ *Page 64, "International Service"*) and describe the problem to us. Our staff are specially trained for such cases and can help you get to the bottom of the matter in a targeted manner, and solve the problem.

10 Correcting problems

10.3 Accessories, spare parts and reference sources

WARNING:

Danger of injury! High-pressure hoses, fittings and couplings are important for appliance safety. Only use original high-pressure hoses, fittings and couplings obtained from us. Otherwise, water under high pressure could come out of high-pressure hoses, fittings and couplings unpredictably and injure you.

WARNING:

Danger of injury! The appliance contains no components that are permitted to be repaired by the owner himself. Only replace parts yourself that are listed in the following table. All other repairs have to be carried out by our customer services (▷Page 64, “International Service”). Otherwise, you will expose yourself to dangers during repair and there could be consequential damage.

You can order the following spare parts:

Item number	Contents
3300001	Set consisting of: 1 motor protection filter + 1 rubber band
3300002	1 rigid brush
3300003	1 roto brush
3300004	Set consisting of: 1 filter screen + 1 adapter for quick coupling
3300005	Set consisting of: 1 cleaning needle + 4 sealing rings

If you require accessories and spare parts:

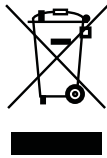
▷Page 64, “International Service“

10 Correcting problems

10.4 Warranty

The minimum warranty standard is the respective implementation of EU Directive 1999/44/EC in national law providing you acquired the appliance as a consumer within the European Union.

10.5 Disposing of the appliance



Dispose of the appliance in compliance with the environmental protection laws of your country. Electrical waste may not be disposed of together with domestic waste. Use local old-appliance collection points instead.

The filter is made from environmentally friendly materials. You can dispose of it — unlike the appliance — with domestic waste.

10 Correcting problems

Test protocol (for commercial use)

NOTE:

High-pressure cleaners used commercially have to be tested by an expert once a year to ensure they meet occupational safety regulations.

NOTE:

This is a photocopying template. Copy it before you fill it out.

Testing criterion	OK		Repair/correction
	yes	no	
Type plate available			
Safety designation available			
Operating instructions available			
Protective casing intact			
Child safety intact			
Pressure line impermeable			
Connection impermeable			
Electricity cable undamaged			
Appliance plug undamaged			
On/off switch intact			
Safety valve opens when pressure exceeded by 15 %			
Only approved chemicals have been used			
Operating pressure of ... is achieved			
Appliance switches off when it reaches the switch-off pressure of ... bar			
Protective conductor resistance not exceeded. Measurement value: ...			

Result of the test:

Place, date:

Signature:

Next test on:

Test protocol (for commercial use)



CE-Konformitätserklärung

CE Declaration of Conformity

Das Erzeugnis entspricht den grundlegenden Anforderungen der einschlägigen EG-Richtlinien. Ein in den Richtlinien vorgesehenes Konformitätsbewertungsverfahren wurde durchgeführt.

The product conforms to the basic requirements of the relevant EC directives. A conformity assessment method as provided for in the directives has been performed.

Firma
Company:

Royal Appliance International GmbH
Jagenbergstraße 19
41468 Neuss
Deutschland / Germany

Gerätebezeichnung:

Hochdruckreiniger + Nass- /Trockensauger

Designation of equipment:

M3300 + M3350

Zum Nachweis entsprechend Niederspannungsrichtlinie 2006/95/EG und Maschinenrichtlinie 2006/42/EG wurden folgende Normen herangezogen:

For verification in accordance with Low Voltage Directive 2006/95/EC and the machinery directive 2006/42/EC, the following standards were applied:

EN 60335-1:2002, +A1:2004, +A11:2004, +A12:2006, +A2:2006, A13:2008

EN 60335-2-2:2003 +A1 +A2 (gilt nur für den Staubsauger/appliances only to the vac)

EN 60335-2-79 (gilt nur für den Hochdruckreiniger/appliances only to the high-pressure cleaner)

EN 62233:2008

Zum Nachweis entsprechend EMV-Richtlinie 2004/108/EG wurden folgende Normen herangezogen:

For verification in accordance with EMC Directive 2004/108/EC, the following standards were applied:

EN 55014-1:2006

EN 55014-2:1997, +A1:2001

EN 61000-3-2:2006

EN 61000-3-3:1995 +A1 +A2

Schalleistungspegel dB(A)
(Hochdruckreiniger)
nach 2000/14/EG Anhang V

Gemessen: 89

Garantiert: 98

Sound power level dB(A)
(High pressure cleaner)
in accordance with 2004/14/EC appendix V

Measured: 89

Guaranteed: 98

Das Erzeugnis entspricht den grundlegenden Anforderungen der ErP Richtlinie 2009/125/EG.

The product conforms to the basic requirements of the ErP directive 2009/125/EC.

Die oben genannte Firma hält die folgende Technische Dokumentation zur Einsicht bereit:

- Bedienungsanleitung
- Konstruktionspläne
- Prüfunterlagen
- Sonstige Technische Dokumentation

The above mentioned company shall keep the following technical documentation in readiness for inspection:

- operating instructions
- design diagrams
- test documents
- other technical documentation

Neuss, 06.06.2012

Ort, Datum

Place, date

Heinz H. Fischer, Geschäftsführer

Name und Unterschrift

Name and signature

North Europe

DE

Royal Appliance International GmbH
Abt. Kundenservice
Jagenbergstraße 19
41468 Neuss
DEUTSCHLAND

Tel.: +49 (0) 180 - 501 50 50*
Tel. Ersatzteile: +49 (0) 1805 15 85 08*
Fax: +49 (0) 2131 - 60 90 60 95

www.dirtdevil.de
servicecenter@dirtdevil.de
Ersatzteile: Ersatzteleshop@dirtdevil.de
*0,14 €/Minute aus dem deutschen Festnetz
(deutscher Mobilfunkhöchstpreis 0,42 €/Minute)

AT

Zmugg Elektronik Service
und Vertriebes. M.b.H.
Fabriksgasse 27
8020 Graz
ÖSTERREICH

Tel. +43 - 316 - 77 21 20
Fax +43 - 316 - 77 21 20 10
Tel. Ersatzteile: +43 - 316 - 77 21 20 14
Fax Ersatzteile: +43 - 316 - 77 21 20 15

zmuggelektronik@utanet.at
www.zmuggelektronik.at

BE

Z.E.S. Goes B.V.
T.a.v. afd. Service
Pearyweg 1
4462 GT Goes
NEDERLAND

Tel: +31 - 113 - 24 07 00
Fax: +31 - 113 - 24 07 50

dirtdevil@zesgoes.nl
www.zesinternational.com

CH

Bluepoint-Service SAGL
Via Cantonale 14
6917 Barbengo
SWITZERLAND

Tel.: +41 (0)91 980 49 73
Fax.: +41 (0)91 605 37 55

info@bluepoint-service.ch
www.bluepoint-service.ch

DK

WhiteBrown A/S Service
c/o BSL Baltship Seatainers Logistics
Egeskovej 6
8700 Horsens
DANMARK

Tel.: +45 73326150

info@whitebrown.eu

FI

Simson Huoltopalvelu Oy
Karvaamokuja 1
00380 Helsinki
SUOMI

Tel.:+358 (0) 20 755 87 90
Fax:+358 (0) 20 755 87 99

huolto@simson.fi
www.simson.fi

LU

Z.E.S. Goes B.V.
T.a.v. afd. Service
Pearyweg 1
4462 GT Goes
NEDERLAND

Tel: +31 - 113 - 24 07 00
Fax: +31 - 113 - 24 07 50

dirtdevil@zesgoes.nl
www.zesinternational.com

NL

Z.E.S. Goes B.V.
T.a.v. afd. Service
Pearyweg 1
4462 GT Goes
NEDERLAND

Tel: +31 - 113 - 24 07 00
Fax: +31 - 113 - 24 07 50

dirtdevil@zesgoes.nl
www.zesinternational.com

NO

Easy Robot AS K.G.
Meldahlsvei 9
1671 Kråkerøy
NORGE

Tel.: +47 4034657

post@easyrobot.no
www.easyrobot.no

Eastern Europe

BG

Pirita Ltd.
6, Tzar Ivan Assen II Str. entr. 2, ap.6
1124 Sofia
България

Tel: +35 (0) 9 2 973 11 31
Fax: +35 (0) 9 2 944 96 49

office@pirita.bg
www.pirita.bg

CZ

K+P service s.r.o.
Vančurova 83
33901 Klatovy
Česká Republika

Tel: +420 - 602 366 221

k.p.servis@seznam.cz
www.tvservis.eu

HU

SEKON BT.
Budafoki út 60
1117 Bp.
MAGYARORSZÁG

Tel: +36 (0)1-205-3180
Fax: +36 (0)1-205-3181
Mobil: +36 (0)70-297-6985

service@invitone.hu
www.invitone.hu

KO

D.Z."VALENTINI"
Jakov Хоха p.n.
10000 Prishtine
KOSOVO

Tel.: +386 49 800 400
Tel.: +377 44 238 440
Tel.: +377 44 168 441
Fax: +381 38 225 000
valentini.service@gmail.com

PL

Obsługa Gwarancyjna i Serwisowa
QUADRA-NET Sp. z o.o.
61-888 Poznań, ul. Składowa 5
POLSKA

Tel.: +48 (0)66 444 88 00
Fax.: +48 (0)61 642 90 62

infolinia@quadra-net.com
www.quadra-net.pl

SI

Strojinc Ciril s.p.
Koseskega ul. 1a
1000 Ljubljana
SLOVENIJA

Tel: +386 (0)1- 42 28 489

rtv.servis.strojinc@siol.net
www.servisni-center.com

SK

PREMT s.r.o.
Skladová 1
91701 Trnava
SLOVAKIA

Tel: +42 (0) 1 33 55 45 007
Fax: +42 (0) 1 33 55 45 007

premt@premt.sk
www.premt.sk

Southern Europe

FR

Service Consommateur France

Tel.: +33 (0)810 810 307**

**Coût d'un appel local depuis un téléphone fixe français. Coût depuis un mobile suivant opérateurs.

Horaires : lundi - vendredi de 9h à 18h

savdirtdevil@tti-fc.com

www.dirtdevilsav.fr

FR

OPM FRANCE

Service pièce de rechange

33 rue du Bois Briand

BP 61635

44316 NANTES CEDEX 3

FRANCE

Tel.: +33 2 40 49 64 25

Fax: +33 2 40 93 96 22

opm@opm-france.com

www.opm-france.com

ES

Reparaciones y recambios:

Electronica Latina, S.L.

Paseo Virgen del Puerto 13

28005 Madrid

ESPANA

Tel.: +34 913 665 202

Tel.: +34 913 665 203

Fax: +34 913 641 233

eleclatina@hotmail.es

ES

Recambios y accesorios online:

Tel.: +34 665 931 296

www.recambiosyaccesoriosonline.es

pedidos@recambiosyaccesoriosonline.es

ES

Call Center / Helpline:

Call Center Madrid, S.L.

Tel.: +34 902 070 425

Fax: +34 931 878 922

atencion.cliente@dirtdevil.es

ES

Reparaciones y recambios:

SAT Eixample

Calabria 277-279

08029 Barcelona

ESPANA

Tel: +34 934 306 950

Fax: +34 934 306 950

sateixample@hotmail.com

ES

Reparaciones y recambios:

M.J. Toribio

Calle Tahona 4

28223 -Pozuelo de Alarcon- Madrid

ESPANA

Tel.: +34 917 156 052

Fax: +34 917 156 052

mjtoribio@telepolis.com

ES

Reparaciones y recambios:

Servicios Tecnicos B E A

Germana de Foix 1

50015 Zaragoza

ESPANA

Tel.: +34 976 520 077

Fax: +34 976 528 200

satbea@satbea.es

www.satbea.es

IT

Ricambi Elettrodomestici

Corso L. Zanussi 11

33080 Porcia

ITALIA

Tel.: +39 434 55 08 33

Fax: +39 434 18 51 001

info@elettrodomesticiricambi.com

www.elettrodomesticiricambi.com

PT

Famatécnica

Rua António Enes, n° 20 C

1050-025 Lisboa

PORTUGAL

Tel.: +35 121 314 35 10

Tel.: +35 121 353 55 65

Fax: +35 121 35 35 565

famatecnica@netcabo.pt

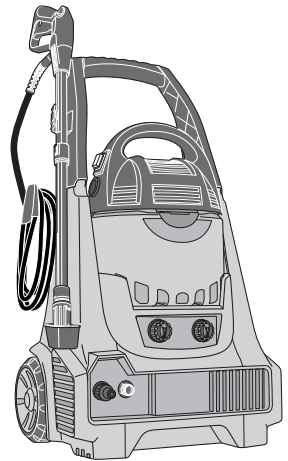
Service card

From: Please print in capitals



PLEASE DETACH THIS PART AND SEND IT IN WITH THE APPLIANCE.

Last name
First name
Street
Zip code and town
Phone number (with area code)
E-mail address
Model High-pressure cleaner and wet/dry vac
Date of purchase
Date and owner's signature



Warranty

The minimum warranty standard is the respective implementation of EU Directive 1999/44/EC in national law providing you acquired the appliance as a consumer within the European Union.

Description of the malfunction:





Royal Appliance International GmbH
Jagenbergstraße 19
41468 Neuss
Germany

servicecenter@dirdevil.de
www.dirdevil.de

☎ +49 (0) 1805 - 10 90 19*
☎ +49 (0) 2131 - 60 90 60 95

* 0.14 €/minute from German landlines, maximum German mobile phone tariff 0.42 €/minute.

The cost of calls from abroad — outside Germany — depend upon the current prices of the respective foreign telephone company.